

---

# ORINDA INCOME OPPORTUNITIES FUND

---

## **Orinda Income Opportunities Fund** of The RBB Fund, Inc.

### **Prospectus December 31, 2019**

<b>Class I</b>	<b>OIOIX</b>
<b>Class A</b>	<b>OIOAX</b>
<b>Class D</b>	<b>OIODX</b>

Beginning on January 1, 2021, as permitted by regulations adopted by the U.S. Securities and Exchange Commission (the “SEC”), paper copies of the Fund’s annual and semi-annual shareholder reports will no longer be sent by mail, unless you specifically request paper copies of the reports. Instead, the reports will be made available on a website and you will be notified by mail each time a report is posted and provided with a website link to access the report.

If you already elected to receive shareholder reports electronically, you will not be affected by this change and you need not take any action. You may elect to receive shareholder reports and other communications from the Fund electronically anytime by contacting your financial intermediary (such as a broker-dealer or a bank) or, if you are a direct investor, by calling 1-855-467-4632.

You may elect to receive all future reports in paper free of charge. If you invest through a financial intermediary, you can contact your financial intermediary to request that you continue to receive paper copies of your shareholder reports. If you invest directly with the Fund, you can call 1-855-467-4632 to inform the Fund that you wish to continue receiving paper copies of your shareholder reports. Your election to receive reports in paper will apply to all funds held in your account if you invest through your financial intermediary or all funds held with the fund complex if you invest directly with the Fund.

The securities described in this prospectus have been registered with the SEC. The SEC, however, has not judged these securities for their investment merit and has not determined the accuracy or adequacy of this prospectus. Anyone who tells you otherwise is committing a criminal offense.

*A look at the investment objective, strategies, risks, expenses and financial history of the Orinda Income Opportunities Fund offered in this Prospectus.*

*Details about the service providers for the Orinda Income Opportunities Fund offered in this Prospectus.*

*Policies and instructions for opening, maintaining and closing an account in the Orinda Income Opportunities Fund offered in this Prospectus.*

## **TABLE OF CONTENTS**

<b>SUMMARY SECTION — ORINDA INCOME OPPORTUNITIES FUND ....</b>	<b>1</b>
<b>ADDITIONAL INFORMATION ABOUT THE FUND’S INVESTMENTS AND RISKS .....</b>	<b>7</b>
<b>Investment Objective .....</b>	<b>7</b>
<b>Additional Information About the Fund’s Principal Investment Strategies and Risks .....</b>	<b>7</b>
<b>Temporary Defensive Strategy .....</b>	<b>8</b>
<b>Principal Investment Risks .....</b>	<b>8</b>
<b>Disclosure of Portfolio Holdings .....</b>	<b>13</b>
<b>MANAGEMENT OF THE FUND .....</b>	<b>13</b>
<b>Investment Adviser .....</b>	<b>13</b>
<b>Portfolio Managers .....</b>	<b>14</b>
<b>Marketing Arrangements .....</b>	<b>14</b>
<b>SHAREHOLDER INFORMATION .....</b>	<b>16</b>
<b>Pricing of Fund Shares .....</b>	<b>16</b>
<b>Market Timing .....</b>	<b>16</b>
<b>Purchase of Fund Shares .....</b>	<b>17</b>
<b>DISTRIBUTION OF FUND SHARES .....</b>	<b>26</b>
<b>Description of Classes .....</b>	<b>26</b>
<b>Minimum Investments .....</b>	<b>28</b>
<b>General Policies .....</b>	<b>28</b>
<b>Conversion Feature .....</b>	<b>29</b>
<b>Fund Mailings .....</b>	<b>29</b>
<b>Householding .....</b>	<b>29</b>
<b>FINANCIAL HIGHLIGHTS .....</b>	<b>31</b>
<b>Appendix A .....</b>	<b>A-1</b>
<b>For More Information .....</b>	<b>Back Cover</b>

# SUMMARY SECTION — ORINDA INCOME OPPORTUNITIES FUND

## Investment Objective

The Orinda Income Opportunities Fund (the “Fund”) seeks to maximize current income with potential for modest growth of capital.

## Expenses and Fees

This table describes the fees and expenses that you may pay if you buy, hold, and sell shares of the Fund. You may pay other fees, such as brokerage commissions and other fees to financial intermediaries, which are not reflected in the tables and examples below. You may qualify for sales charge discounts if you and your family invest, or agree to invest in the future, at least \$50,000 in the Fund’s Class A shares. More information about these and other discounts is available from your financial professional and in the “Distribution of Fund Shares” section of the Fund’s Prospectus and the “Other Information Regarding Maximum Sales Charge, Purchases and Redemptions” section of the Fund’s Statement of Additional Information (“SAI”). Each financial intermediary may impose different sales charges and these variations are described in Appendix A of the Fund’s Prospectus.

Additionally, you may be required to pay commissions and/or other forms of compensation to a broker for transactions in Class I Shares of the Fund, which are not reflected in the tables or the examples below.

<b>SHAREHOLDER FEES</b> (fees paid directly from your investment)	<b>Class I</b>	<b>Class A</b>	<b>Class D</b>
Maximum Sales Charge (Load) Imposed on Purchases (as a percentage of offering price)	None	5.00%	None
<b>ANNUAL FUND OPERATING EXPENSES</b> (expenses that you pay each year as a percentage of the value of your investment)			
Management Fees	1.00%	1.00%	1.00%
Distribution and/or Service (Rule 12b-1) Fees	None	0.25%	1.00%
Other Expenses	0.29%	0.33%	0.28%
Short Sale Expenses			
Dividend and Interest Expense	0.50%	0.46%	0.52%
Acquired Fund Fees and Expenses <sup>(1)</sup>	<u>0.12%</u>	<u>0.12%</u>	<u>0.12%</u>
Total Annual Fund Operating Expenses <sup>(1)</sup>	<u>1.91%</u>	<u>2.16%</u>	<u>2.92%</u>

<sup>(1)</sup> Acquired Fund Fees and Expenses are indirect fees and expenses that the Fund incurs from investing in the shares of other mutual funds, including money market funds and exchange traded funds. Please note that the amount of Total Annual Fund Operating Expenses shown in the above table will differ from the “Financial Highlights” section of the Prospectus, which reflects the operating expenses of the Fund and does not include indirect expenses such as Acquired Fund Fees and Expenses.

## Example

This Example is intended to help you compare the cost of investing in the Fund with the cost of investing in other mutual funds. The Example assumes that you invest \$100,000 in Class I Shares of the Fund and \$10,000 in Class A and Class D Shares of the Fund (the minimum initial investment for Class A and Class D Shares is \$5,000) for the time periods indicated and that you sell your shares at the end of those periods. The Example also assumes that each year your investment has a 5% return and Fund operating expenses remain the same. Although your actual costs and returns might be different, your approximate costs of investing in the Fund would be:

	<u>1 Year</u>	<u>3 Years</u>	<u>5 Years</u>	<u>10 Years</u>
Class I	\$1,940	\$6,000	\$10,316	\$22,327
Class A	\$708	\$1,142	\$1,601	\$2,868
Class D	\$295	\$904	\$1,538	\$3,242

## Portfolio Turnover

The Fund pays transaction costs, such as commissions, when it buys and sells securities (or “turns over” its portfolio). A higher portfolio turnover rate may indicate higher transaction costs and may result in higher taxes when Fund shares are held in a taxable account. These costs, which are not reflected in total annual Fund operating expenses or in the Example, affect the Fund’s performance. During the most recent fiscal year ended August 31, 2019, the Fund’s portfolio turnover rate was 131% of the average value of its portfolio.

## Summary of Principal Investment Strategies

The Fund will attempt to achieve its investment objective by investing in U.S. and non-U.S. securities and investment instruments including, but not limited to, equity securities, debt securities, and derivatives. The Fund's allocation to these various security types and asset classes will vary over time in response to changing market opportunities with the goal of maximizing current income.

The Fund may invest without limit in equity securities of issuers of any market capitalization. The types of equity securities in which the Fund will generally invest include common stocks, preferred stocks, real estate investment trusts ("REITs"), master limited partnerships ("MLPs"), rights, warrants, depositary receipts and other investment companies, including exchange-traded funds ("ETFs"). The Fund's equity investments may also take the form of depositary receipts including American Depositary Receipts ("ADRs"), European Depositary Receipts ("EDRs") and Global Depositary Receipts ("GDRs"). The Fund generally invests in dividend paying stocks. The Fund may invest up to 25% of its net assets in initial public offerings ("IPOs"). The Fund may also invest without limit in foreign securities, including up to 50% of its net assets in securities of issuers located in emerging markets.

The Fund will generally invest at least 50% of its net assets in REITs. As a result of its investments in REITs, the Fund will be concentrated in the real estate industry. The Fund may invest in "Rule 144A" securities, which are privately placed, restricted securities that may only be resold under certain circumstances to other qualified institutional buyers.

The Fund may invest without limit in debt securities, provided that no more than 30% of its net assets are invested in debt securities rated below investment grade (known as "junk bonds"). The types of debt securities in which the Fund may invest generally include instruments and obligations of U.S. and non-U.S. corporate and other non-governmental entities, those of U.S. and non-U.S. governmental entities, mortgage-related or mortgage-backed securities (including "sub-prime" mortgages), asset-backed securities, exchange-traded notes ("ETNs"), floating rate loans, convertible securities, inflation-linked debt securities and subordinated debt securities. The Fund invests in debt securities with a broad range of maturities and the Fund's investments may have fixed or variable principal payments.

The Fund may invest up to 85% of its net assets in derivatives, including options, futures (such as bond, index, interest rate and currency futures, but excluding commodities futures) and swaps (such as credit-default swaps, interest rate swaps and total return swaps). These derivative instruments may be used for investment purposes, to modify or hedge the Fund's exposure to a particular investment market related risk, to manage the volatility of the Fund, to hedge against adverse changes in the market price of securities, interest rates or currency exchange rates and as a substitute for purchasing or selling securities.

The Fund may utilize leverage (by borrowing against a line of credit for investment purposes) up to one-third of the value of its assets as part of the portfolio management process. The Fund may also sell securities short with respect to 100% of its net assets and may lend its portfolio securities to generate additional income. A short sale is the sale by the Fund of a security that it does not own in anticipation of purchasing the same security in the future at a lower price to close the short position.

The Fund will sell (or close a position in) a security when Orinda Asset Management LLC (the "Adviser") determines that a particular security has achieved its investment expectations or the reasons for maintaining that position are no longer valid. It is expected that the Fund will have a portfolio turnover in excess of 100% on an annual basis. The Fund's investment strategies may periodically result in a significant portion of its assets being invested in the securities of companies in the same sector of the market.

The Adviser may also invest up to 100% of the Fund's total assets in cash, money-market instruments, bank obligations and other high-quality debt securities for temporary defensive purposes.

## Summary of Principal Risks

Losing all or a portion of your investment is a risk of investing in the Fund. The value of your investment in the Fund, as well as the amount of return you receive on your investment, may fluctuate significantly from day to day and over time. The Fund's principal risks are presented in alphabetical order to facilitate finding particular risks and comparing them with other funds. Each risk summarized below is considered a "principal risk" of investing in the Fund, regardless of the order in which it appears. Different risks may be more significant at different times depending on market conditions or other factors.

- **Convertible Bond Risk.** Convertible bonds are hybrid securities that have characteristics of both bonds and common stocks and are therefore subject to both debt security risks and equity risk. Convertible bonds are subject to equity risk especially when their conversion value is greater than the interest and principal value of the bond. The prices of equity securities may rise or fall because of economic or political changes and may decline over short or extended periods of time.
- **Credit Risk.** The issuers of the bonds and other debt securities held by the Fund may not be able to make interest or principal payments. The degree of credit risk depends on the issuer's financial condition and on the terms of the securities.

- **Currency Risk.** Changes in foreign currency exchange rates will affect the value of what the Fund owns and the Fund's share price. Generally, when the U.S. dollar rises in value against a foreign currency, an investment in that country loses value because that currency is worth fewer U.S. dollars. Devaluation of a currency by a country's government or banking authority also will have a significant impact on the value of any investments denominated in that currency. Currency markets generally are not as regulated as securities markets.
- **Cyber Security Risk.** Cyber security risk is the risk of an unauthorized breach and access to Fund assets, Fund or customer data (including private shareholder information), or proprietary information, or the risk of an incident occurring that causes the Fund, the investment adviser, custodian, transfer agent, distributor and other service providers and financial intermediaries to suffer data breaches, data corruption or lose operational functionality or prevent Fund investors from purchasing, redeeming or exchanging shares or receiving distributions. The Fund and its investment adviser have limited ability to prevent or mitigate cyber security incidents affecting third-party service providers. Successful cyber-attacks or other cyber-failures or events affecting the Fund or its service providers may adversely impact and cause financial losses to the Fund or its shareholders.
- **Depository Receipt Risk.** Depository receipts may be purchased through "sponsored" or "unsponsored" facilities. A sponsored facility is established jointly by the issuer of the underlying security and a depository, whereas a depository may establish an unsponsored facility without participation by the issuer of the depository security. Holders of unsponsored depository receipts generally bear all the costs of such facilities and the depository of an unsponsored facility frequently is under no obligation to distribute shareholder communications received from the issuer of the deposited security or to pass through voting rights to the holders of such receipts of the deposited securities. In addition, investment in ADRs, EDRs and GDRs may be less liquid than the underlying shares in their primary trading market.
- **Derivatives Risk.** The Fund's use of derivatives (which may include options, futures and swaps, among others) may reduce the Fund's returns and/or increase volatility. Derivatives involve the risk of improper valuation, the risk of ambiguous documentation, and the risk that changes in the value of the derivative may not correlate perfectly with the underlying security. Derivatives are also subject to market risk, interest rate risk, credit risk, counterparty risk and liquidity risk. Derivatives may be more sensitive to changes in economic or market conditions than other types of investments and could result in losses that significantly exceed the Fund's original investment.
- **Exchange-Traded Fund and Mutual Fund Risk.** When the Fund invests in an ETF or mutual fund, it will bear additional expenses based on its pro rata share of the ETFs or mutual fund's operating expenses, including the potential duplication of management fees. The risk of owning an ETF or mutual fund generally reflects the risks of owning the underlying securities the ETF or mutual fund holds. The Fund also will incur brokerage costs when it purchases ETFs. Index ETFs may not track their underlying indices.
- **Exchange-Traded Note Risk.** The value of an ETN may be influenced by time to maturity, level of supply and demand for the ETN, volatility and lack of liquidity in the underlying securities' markets, changes in the applicable interest rates, changes in the issuer's credit rating and economic, legal, political or geographic events that affect the referenced index. In addition, the notes issued by ETNs and held by the Fund are unsecured debt of the issuer.
- **Fixed Income Securities Risk.** Fixed income securities are subject to interest rate risk and credit risk. There is also the risk that an issuer may "call," or repay, its high yielding bonds before their maturity dates.
- **Foreign and Emerging Market Securities Risk.** Foreign investments may carry risks associated with investing outside the United States, such as currency fluctuation, economic or financial instability, lack of timely or reliable financial information or unfavorable political or legal developments. Those risks are increased for investments in emerging markets.
- **Futures Risk.** The value of a futures contract tends to increase and decrease in correlation with the value of the underlying instrument. Risks of futures contracts may arise from an imperfect correlation between movements in the price of the futures and the price of the underlying instrument. The Fund's use of futures contracts (and related options) exposes the Fund to leverage risk because of the small margin requirements relative to the value of the futures contract. While futures contracts are generally liquid instruments, under certain market conditions they may become illiquid. The price of futures can be highly volatile; using them could lower total return, and the potential loss from futures could exceed the Fund's initial investment in such contracts.
- **Government-Sponsored Entities Risk.** Securities issued by government-sponsored entities may not be backed by the full faith and credit of the United States.

- **High-Yield Securities Risk.** Fixed income securities that are rated below investment grade (i.e., “junk bonds”) are subject to additional risk factors due to the speculative nature of these securities, such as increased possibility of default liquidation of the security, and changes in value based on public perception of the issuer.
- **Initial Public Offering Risk.** The market value of IPO shares may fluctuate considerably due to factors such as the absence of a prior public market, unseasoned trading, the small number of shares available for trading and limited information about the issuer. The purchase of IPO shares may involve high transaction costs. IPO shares are subject to market risk and liquidity risk.
- **Interest Rate Risk.** The market value of fixed income securities changes in response to interest rate changes and other factors. Generally, prices of fixed income securities will increase as interest rates fall and will decrease as interest rates rise. It is likely there will be less governmental action in the near future to maintain low interest rates. The negative impact on fixed income securities from the resulting rate increases for that and other reasons could be swift and significant.
- **Large Companies Risk.** The securities of large capitalization companies may underperform other segments of the market because such companies may be less responsive to competitive challenges and opportunities and may be unable to attain or maintain high growth rates during periods of economic expansion.
- **Leverage and Short Sales Risk.** Leverage is the practice of borrowing money to purchase securities. If the securities decrease in value, the Fund will suffer a greater loss than would have resulted without the use of leverage. A short sale will be successful if the price of the shorted security decreases, however, if the underlying security goes up in price during the period in which the short position is outstanding, the Fund will realize a loss. The risk on a short sale is unlimited because the Fund must buy the shorted security at the higher price to complete the transaction. Therefore, short sales may be subject to greater risks than investments in long positions.
- **Management Risk.** The skill of the Adviser will play a significant role in the Fund’s ability to achieve its investment objective. The Fund’s ability to achieve its investment objective depends on the investment skill and ability of the Adviser and on its ability to correctly identify economic trends.
- **Market Risk.** The value of the Fund’s shares will fluctuate as a result of the movement of the overall stock market or the value of the individual securities held by the Fund, and you could lose money.
- **Master Limited Partnership Risk.** Investments in securities (units) of MLPs involve risks that differ from an investment in common stock. To the extent that an MLP’s interests are all in a particular industry, the MLP will be negatively impacted by economic events adversely impacting that industry. Additionally, holders of the units of MLPs have more limited control and limited rights to vote on matters affecting the partnership. There are also certain tax risks associated with an investment in units of MLPs.
- **Mortgage-Related and Other Asset-Backed Securities Risk.** Generally, rising interest rates tend to extend the duration of fixed rate mortgage-related securities, making them more sensitive to changes in interest rates. As a result, in a period of rising interest rates, if the Fund holds mortgage-related securities, it may exhibit additional volatility. This is known as extension risk. In addition, adjustable and fixed rate mortgage-related securities are subject to prepayment risk. When interest rates decline, borrowers may pay off their mortgages sooner than expected. This can reduce the returns of the Fund because it may have to reinvest that money at the lower prevailing interest rates. The risk of default is generally higher in mortgage-related investments that include sub-prime mortgages. Asset-backed securities are subject to risks similar to those associated with mortgage-related securities.
- **Options Risk.** Purchasing and writing put and call options are highly specialized activities and entail greater than ordinary investment risks. The Fund may not fully benefit from or may lose money on an option if changes in its value do not correspond as anticipated to changes in the value of the underlying securities.
- **Portfolio Turnover Risk.** A high portfolio turnover rate (100% or more on an annualized basis) increases the Fund’s transaction costs (including brokerage commissions and dealer costs), which adversely impacts the Fund’s performance. Higher portfolio turnover may result in the realization of more short-term capital gains than if the Fund had lower portfolio turnover.
- **Preferred Stock Risk.** Preferred stocks may be more volatile than fixed income securities and are more correlated with the issuer’s underlying common stock than fixed income securities. Additionally, the dividend on a preferred stock may be changed or omitted by the issuer.

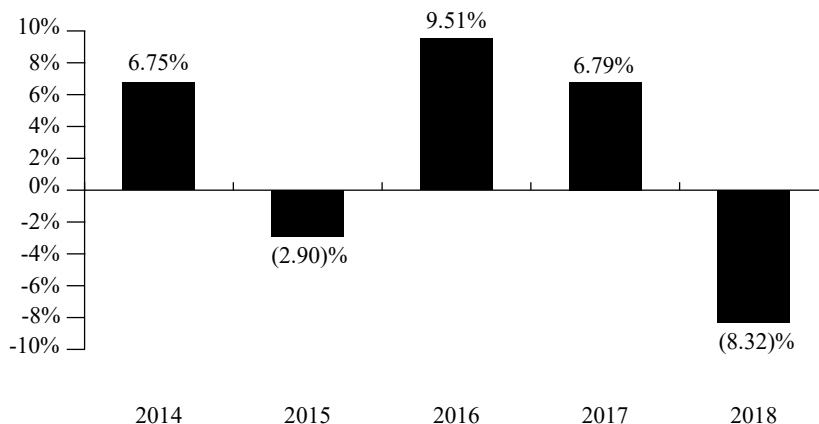
- **Real Estate and REIT Concentration Risk.** The Fund is vulnerable to the risks of the real estate industry, such as the risk that a decline in rental income may occur because of extended vacancies, the failure to collect rents, increased competition from other properties, or poor management. The value and performance of REITs depends on how well the underlying properties owned by the REIT are managed. In addition, the value of an individual REIT's securities can decline if the REIT fails to continue qualifying for special tax treatment. Investments in REITs may involve duplication of management fees and other expenses.
- **Rule 144A Securities Risk.** The market for Rule 144A securities typically is less active than the market for publicly-traded securities. Rule 144A securities carry the risk that the liquidity of these securities may become impaired, making it more difficult for the Fund to sell these bonds.
- **Sector Risk.** To the extent the Fund invests a significant portion of its assets in the securities of companies in the same sector of the market, the Fund is more susceptible to economic, political, regulatory and other occurrences influencing those sectors.
- **Small and Medium Companies Risk.** Investing in securities of small and medium capitalization companies may involve greater volatility than investing in larger and more established companies because small and medium capitalization companies can be subject to more abrupt or erratic share price changes than larger, more established companies.
- **Swaps Risk.** In a swap transaction, one party agrees to pay the other party an amount equal to the return, based upon an agreed-upon notional value, of a defined underlying asset or a non-asset reference (such as an index) during a specified period of time. In return, the other party would make periodic payments based on a fixed or variable interest rate or on the return from a different underlying asset or non-asset reference based upon an agreed-upon notional value. Swaps could result in losses if the underlying asset or reference does not perform as anticipated. The value of swaps, like many other derivatives, may move in unexpected ways and may result in losses for the Fund. Such transactions can have the potential for unlimited losses.

### Performance Information

The Fund was reorganized following the close of business on April 28, 2017, to acquire the assets and liabilities of the Orinda Income Opportunities Fund, a series of Advisors Series Trust (the "Predecessor Fund"), in exchange for shares of the Fund. Accordingly, the Fund is the successor to the Predecessor Fund, and the following performance information shown prior to May 1, 2017, is that of the Predecessor Fund. The Fund has an investment objective, strategies and policies substantially similar to the Predecessor Fund, which was also advised by the Adviser.

The following information provides some indication of the risks of investing in the Fund. The bar chart shows changes in the Class I performance from year to year. The table shows how the Fund's average annual returns for 1-year and since inception periods compare with those of broad measures of market performance. The Fund's past performance, before and after taxes, is not necessarily an indication of how the Fund will perform in the future. Updated performance information is available at [www.orindafunds.com](http://www.orindafunds.com) or by calling the Fund toll-free at 1-855-467-4632 (855-4ORINDA).

#### Total Returns for the Calendar Years Ended December 31



\* The Fund's year-to-date total return as of September 30, 2019 was 18.40%.

Best and Worst Quarterly Performance of the Fund (for the periods reflected in the chart above):

Best Quarter: 6.50% (quarter ended June 30, 2016)  
 Worst Quarter: -9.55% (quarter ended December 31, 2018)

### ***Average Annual Total Returns***

The table below compares the average annual total returns for the Fund before taxes for the past calendar year and since inception periods to the average annual total returns of a broad-based securities market index for the same periods.

<b>Average Annual Total Returns</b> (For the periods ended December 31, 2018)	<b>1 Year</b>	<b>5 Year</b>	<b>Since Inception (6/28/2013)<sup>(1)</sup></b>	<b>Since Inception (9/27/2013)<sup>(2)</sup></b>
<b>Class I</b>				
Return Before Taxes	-8.32%	2.13%	2.08%	N/A
Return After Taxes on Distributions	-9.46%	0.11%	0.11%	N/A
Return After Taxes on Distributions and Sale of Fund Shares	-4.42%	1.01%	0.98%	N/A
<b>Class A</b>				
Return Before Taxes	-13.19%	0.78%	0.83%	N/A
<b>Class D</b>				
Return Before Taxes	-9.24%	1.15%	N/A	1.17%
<b>Bloomberg Barclays U.S. Aggregate Bond Index</b> (reflects no deduction for fees, expenses, or taxes)				
	0.01%	2.52%	2.36%	2.36%

<sup>(1)</sup> The Predecessor Fund's Class I and Class A shares commenced operations on June 28, 2013.

<sup>(2)</sup> The Predecessor Fund's Class D shares commenced operations on September 27, 2013.

After-tax returns were calculated using the historical highest individual federal marginal income tax rates and do not reflect the impact of state and local taxes. Actual after-tax returns depend on your tax situation and may differ from those shown and after-tax returns shown are not relevant to those who hold their Fund shares through tax-deferred arrangements such as 401(k) plans or individual retirement accounts ("IRAs"). After-tax returns are shown only for Class I; after-tax returns for Class A and Class D will vary, to the extent each class has different expenses. The Return After Taxes on Distributions and Sale of Fund Shares is higher than other return figures when a capital loss occurs upon a redemption of Fund shares.

### **Management of the Fund**

#### ***Investment Adviser***

Orinda Asset Management LLC  
3390 Mt. Diablo Boulevard, Suite 250, Lafayette, CA 94549

#### ***Portfolio Managers***

Paul Gray  
Managing Partner and Chief Investment Officer of the Adviser  
Co-Portfolio Manager since June 28, 2013.

Ian Goltra  
Portfolio Manager of the Adviser  
Co-Portfolio Manager since September 2016.

### **Purchase and Sale of Fund Shares**

<b>Type of Account</b>	<b>Minimum Initial Investment</b>	<b>Minimum Subsequent Investment</b>
<i>Class I</i>		
All Accounts	\$100,000	Any amount
<i>Class A and Class D</i>		
All Accounts	\$5,000	Any amount



You can purchase and redeem shares of the Fund only on days the New York Stock Exchange (“NYSE”) is open. Shares of the Fund may be available through certain brokerage firms, financial institutions and other industry professionals (collectively, “Service Organizations”). Shares of the Fund may also be purchased and redeemed directly through The RBB Fund, Inc. (the “Company”) by the means described below.

***Purchase and Redemption By Mail:***

Orinda Income Opportunities Fund  
c/o U.S. Bank Global Fund Services  
P.O. Box 701  
Milwaukee, Wisconsin 53201-0701

***Purchase and Redemption By Wire:***

Request routing instructions by calling the Fund’s transfer agent at 1-855-467-4632 (855-4ORINDA).

***Redemption By Telephone:*** If you select the option on your account application, you may call U.S. Bancorp Fund Services, LLC, doing business as U.S. Bank Global Fund Services (the “Transfer Agent”) at 1-855-467-4632 (855-4ORINDA).

**Taxes**

The Fund intends to make distributions that may be taxed at ordinary income or capital gain rates.

**Payments to Broker-Dealers and Other Financial Intermediaries**

If you purchase the Fund through a broker-dealer or other financial intermediary (such as a bank), the Fund and its related companies may pay the intermediary for the sale of Fund shares and other related services. These payments may create a conflict of interest by influencing the broker-dealer or other intermediary and your salesperson to recommend the Fund over another investment. Ask your salesperson or visit your financial intermediary’s website for more information.

## **ADDITIONAL INFORMATION ABOUT THE FUND’S INVESTMENTS AND RISKS**

This section provides some additional information about the Fund’s investments and certain portfolio management techniques that the Fund may use. More information about the Fund’s investments and portfolio management techniques, some of which entail risks, is included in the SAI.

**Investment Objective**

The Fund seeks to maximize current income with potential for modest growth of capital. The Fund’s investment objective may be changed by the Board of Directors (the “Board”) of the Company without shareholder approval. Shareholders will, however, receive 60 days’ prior notice of any changes. Any such changes may result in the Fund having investment objectives different from the objectives that the shareholder considered appropriate at the time of investment in the Fund.

**Additional Information About the Fund’s Principal Investment Strategies and Risks**

The Fund will attempt to achieve its investment objective by investing in U.S. and non-U.S. securities and investment instruments including, but not limited to, equity securities, debt securities, and derivatives. The Fund’s allocation to these various security types and asset classes will vary over time in response to changing market opportunities with the goal of maximizing current income.

The Fund may invest without limit in equity securities of issuers of any market capitalization. The types of equity securities in which the Fund will generally invest include common stocks, preferred stocks, REITs, MLPs, rights, warrants, depositary receipts and other investment companies, including ETFs. The Fund’s equity investments may also take the form of depositary receipts including ADRs, EDRs and GDRs. The Fund generally invests in dividend paying stocks. The Fund may invest up to 25% of its net assets in IPOs. The Fund may also invest without limit in foreign securities, including up to 50% of its net assets in securities of issuers located in emerging markets. As a result of its investments in REITs, the Fund will be concentrated in the real estate industry. The Fund may invest in “Rule 144A” securities, which are privately placed, restricted securities that may only be resold under certain circumstances to other qualified institutional buyers.

The Fund may invest without limit in debt securities, provided that no more than 30% of its net assets are invested in debt securities rated below investment grade (known as “junk bonds”). The types of debt securities in which the Fund may invest generally include instruments and obligations of U.S. and non-U.S. corporate and other non-governmental entities, those of U.S. and non-U.S. governmental entities, mortgage-related or mortgage-backed securities (including “sub-prime” mortgages), asset-backed securities,

ETNs, floating rate loans, convertible securities, inflation-linked debt securities and subordinated debt securities. The Fund invests in debt securities with a broad range of maturities. The Fund's investments may have fixed or variable principal payments and all types of interest rate payment and reset terms, including fixed rate, adjustable rate, floating rate, zero coupon, contingent, deferred, payment in kind and auction rate features. The Fund's investments may include instruments that allow for balloon payments or negative amortization payments.

The Fund may invest up to 85% of its net assets in derivatives, including options, futures (such as bond, index, interest rate and currency futures, but excluding commodities futures) and swaps (such as credit-default swaps, interest rate swaps and total return swaps). These derivative instruments may be used for investment purposes, to modify or hedge the Fund's exposure to a particular investment market related risk, to manage the volatility of the Fund, to hedge against adverse changes in the market price of securities, interest rates or currency exchange rates and as a substitute for purchasing or selling securities.

The Fund may utilize leverage (by borrowing against a line of credit for investment purposes) up to one-third of the value of its assets as part of the portfolio management process. The Fund may also sell securities short with respect to 100% of its net assets and may lend its portfolio securities to generate additional income.

The Adviser will generally use a bottom up approach when selecting equity investments, with an emphasis on dividend yield, earnings growth and valuation. The Fund will invest in companies that the Adviser believes offer attractive yields with the potential for long-term capital appreciation. Debt securities will be evaluated using traditional fundamental analysis of the issuer to determine credit quality, combined with valuation metrics of the fixed-income security, including spread compared to relevant government securities and yield compared to fixed income securities with similar credit risk. Distressed and below investment grade securities analysis may also include likelihood of capital appreciation. Derivative securities will be evaluated based on their ability to meet the Adviser's exposure objective for the derivative security. For example, the correlation of a derivative security to the security or basket of securities it is intended to hedge, or the annualized yield premium on a covered call intended to increase income.

The Fund will sell (or close a position in) a security when the Adviser determines that a particular security has achieved its investment expectations or the reasons for maintaining that position are no longer valid. It is expected that the Fund will have a portfolio turnover in excess of 100% on an annual basis. The Fund's investment strategies may periodically result in a significant portion of its assets being invested in the securities of companies in the same sector of the market.

### ***Temporary Defensive Strategy***

When adverse market, economic, political or other conditions dictate a more defensive investment strategy, the Fund may, on a temporary basis, hold cash or invest a portion or all of its assets in money-market instruments including money market funds, obligations of the U.S. government, its agencies or instrumentalities, obligations of foreign sovereignties, other high-quality debt securities, including prime commercial paper, repurchase agreements and bank obligations, such as bankers' acceptances and certificates of deposit. Under normal market conditions, the potential for capital appreciation on these securities will tend to be lower than the potential for capital appreciation on other securities that may be owned by the Fund. In taking such a defensive position, the Fund would temporarily not be pursuing its principal investment strategies and may not achieve its investment objective.

### **Principal Investment Risks**

***Convertible Bond Risk.*** Convertible bonds are hybrid securities that have characteristics of both bonds and common stocks and are therefore subject to both debt security risk and conversion value-related equity risk. Convertible bonds are similar to other fixed-income securities because they usually pay a fixed interest rate and are obligated to repay principal on a given date in the future. The market value of fixed-income securities tends to decline as interest rates increase. Convertible bonds are particularly sensitive to changes in interest rates when their conversion to equity feature is small relative to the interest and principal value of the bond. Convertible issuers may not be able to make principal and interest payments on the bond as they become due. Convertible bonds may also be subject to prepayment or redemption risk. If a convertible bond held by the Fund is called for redemption, the Fund will be required to surrender the security for redemption and convert it into the issuing company's common stock or cash at a time that may be unfavorable to the Fund. Convertible securities have characteristics similar to common stocks especially when their conversion value is greater than the interest and principal value of the bond. The prices of equity securities may rise or fall because of economic or political changes. Stock prices in general may decline over short or even extended periods of time. Market prices of equity securities in broad market segments may be adversely affected by a prominent issuer having experienced losses or by the lack of earnings or such an issuer's failure to meet the market's expectations with respect to new products or services, or even by factors wholly unrelated to the value or condition of the issuer, such as changes in interest rates. When a convertible bond's value is more closely tied to its conversion to stock feature, it is sensitive to the underlying stock's price.

**Credit Risk.** The issuers of the bonds and other debt securities held by the Fund may not be able to make interest or principal payments. Even if these issuers are able to make interest or principal payments, they may suffer adverse changes in financial condition that would lower the credit quality of the security, leading to greater volatility in the price of the security.

**Currency Risk.** If the Fund invests directly in foreign (non-U.S.) currencies or in securities that trade in, and receive revenues in, foreign (non-U.S.) currencies, or in derivatives that provide exposure to foreign (non-U.S.) currencies, it will be subject to the risk that those currencies will decline in value relative to the U.S. dollar, or, in the case of hedging positions, that the U.S. dollar will decline in value relative to the currency being hedged. Currency rates may fluctuate significantly over short periods of time for a number of reasons, including changes in interest rates, intervention (or the failure to intervene) by U.S. or foreign governments, central banks or supranational entities such as the International Monetary Fund, or by the imposition of currency controls or other political developments in the United States or abroad.

**Cyber Security Risk.** With the increased use of technologies such as the internet to conduct business, the Fund is susceptible to operational, information security and related risks. In general, cyber incidents can result from deliberate attacks or unintentional events. Cyber-attacks include, but are not limited to, gaining unauthorized access to digital systems (e.g., through “hacking” or malicious software coding) for purposes of misappropriating assets or sensitive information, corrupting data, or causing operational disruption. Cyber-attacks may also be carried out in a manner that does not require gaining unauthorized access, such as causing denial-of-service attacks on websites (i.e., efforts to make network services unavailable to intended users). Cyber security failures or breaches by the Fund’s Adviser and other service providers (including, but not limited to, Fund accountant, custodian, transfer agent and administrator), and the issuers of securities in which the Fund invests, have the ability to cause disruptions and impact business operations, potentially resulting in financial losses, interference with the Fund’s ability to calculate its NAV, impediments to trading, the inability of Fund shareholders to transact business, violations of applicable privacy and other laws, regulatory fines, penalties, reputational damage, reimbursement or other compensation costs, or additional compliance costs. In addition, substantial costs may be incurred in order to prevent any cyber incidents in the future. While the Adviser has established business continuity plans in the event of, and risk management systems to prevent, such cyber-attacks, there are inherent limitations in such plans and systems including the possibility that certain risks have not been identified. Furthermore, the Fund cannot control the cyber security plans and systems put in place by service providers to the Fund and issuers in which the Fund invests. The Fund and its shareholders could be negatively impacted as a result.

**Depository Receipt Risk.** Depository receipts may be purchased through “sponsored” or “unsponsored” facilities. A sponsored facility is established jointly by the issuer of the underlying security and a depository, whereas a depository may establish an unsponsored facility without participation by the issuer of the depository security. Holders of unsponsored depository receipts generally bear all the costs of such facilities and the depository of an unsponsored facility frequently is under no obligation to distribute shareholder communications received from the issuer of the deposited security or to pass through voting rights to the holders of such receipts of the deposited securities. ADRs, which are U.S. dollar-denominated receipts representing shares of foreign-based corporations, are issued by U.S. banks or trust companies, and entitle the holder to all dividends and capital gains that are paid out on the underlying foreign shares. GDRs, which are similar to ADRs, are shares of foreign-based corporations generally issued by international banks in one or more markets around the world. In addition, EDRs, similar to GDRs, are shares of foreign-based corporations generally issued by European banks that trade on exchanges outside of the bank’s home country. Investment in ADRs, GDRs and EDRs may be less liquid than the underlying shares in their primary trading market and GDRs, many of which are issued by companies in emerging markets, may be more volatile.

**Derivatives Risk.** Derivatives are financial contracts whose value depends on, or are derived from, the value of an underlying asset, reference rate or index. The Fund typically uses derivatives as a substitute for taking a position in the underlying asset and/or as part of a strategy designed to reduce exposure to other risks, such as interest rate or currency risk. The various derivative instruments that the Fund may use are options, futures and swaps, among others. The Fund may also use derivatives for leverage, in which case their use would involve leveraging risk. The Fund’s use of derivative instruments involves risks different from, or possibly greater than, the risks associated with investing directly in securities and other traditional investments. Derivatives are subject to a number of risks, such as liquidity risk, interest rate risk, market risk, credit risk and management risk. They also involve the risk of mispricing or improper valuation and the risk that changes in the value of the derivative may not correlate perfectly with the underlying asset, rate or index. A fund investing in a derivative instrument could lose more than the principal amount invested. Also, suitable derivative transactions may not be available in all circumstances and there can be no assurance that the Fund will engage in these transactions to reduce exposure to other risks when that would be beneficial.

**ETF and Mutual Fund Risk.** ETFs are typically open-end investment companies that are bought and sold on a national securities exchange. When the Fund invests in an ETF, it will bear additional expenses based on its pro rata share of the ETF’s operating expenses, including the potential duplication of management fees. The risk of owning an ETF generally reflects the risks of owning the underlying securities it holds. Many ETFs seek to replicate a specific benchmark index. However, an ETF may not fully replicate

the performance of its benchmark index for many reasons, including because of the temporary unavailability of certain index securities in the secondary market or discrepancies between the ETF and the index with respect to the weighting of securities or the number of stocks held. Some ETFs are actively-managed and do not seek to replicate or track any benchmark index. Actively-managed ETFs are subject to risk of poor investment, and the individual investments of an actively-managed ETF may not perform as well as its investment adviser and/or sub-advisers expect, and/or the actively managed ETF's portfolio management practices do not work to achieve their desired result. Lack of liquidity in an ETF could result in an ETF being more volatile than the underlying portfolio of securities it holds. In addition, because of ETF expenses, compared to owning the underlying securities directly, it may be more costly to own an ETF. The Fund also will incur brokerage costs when it purchases ETFs.

If the Fund invests in shares of another mutual fund, shareholders will indirectly bear fees and expenses charged by the underlying mutual funds in which the Fund invests in addition to the Fund's direct fees and expenses. Furthermore, investments in other mutual funds could affect the timing, amount and character of distributions to shareholders and therefore may increase the amount of taxes payable by investors in the Fund.

The market for an ETF's shares may become less liquid in response to deteriorating liquidity in the markets for the ETF's underlying portfolio holdings, which could lead to differences between the market price of the ETF's shares and the underlying value of those shares. An ETF's market price may deviate from the value of the ETF's underlying portfolio holdings, particularly in times of market stress, with the result that investors may pay significantly more or receive significantly less than the underlying value of the ETF shares bought or sold. An active trading market for shares of the ETF may not develop or be maintained. In times of market stress, market makers or authorized participants may step away from their respective roles in making a market in shares of the ETF and in executing purchase or redemption orders, which could also lead to variances between the market price of the ETF's shares and the underlying value of those shares.

**Exchange-Traded Note Risk.** ETNs are subject to the credit risk of the issuer. The value of an ETN will vary and will be influenced by its time to maturity, level of supply and demand for the ETN, volatility and lack of liquidity in underlying securities, currency and commodities markets as well as changes in the applicable interest rates, changes in the issuer's credit rating, and economic, legal, political, or geographic events that affect the referenced index. There may be restrictions on the Fund's right to redeem its investment in an ETN, which is meant to be held until maturity. The Fund's decision to sell its ETN holdings may be limited by the availability of a secondary market.

**Fixed Income Securities Risk.** In addition to interest rate risk and credit risk, there is also the risk that an issuer may "call," or repay, its high yielding bonds before their maturity dates. Fixed income securities subject to prepayment can offer less potential for gains during a declining interest rate environment and similar or greater potential for loss in a rising interest rate environment. Limited trading opportunities for certain fixed income securities may make it more difficult to sell or buy a security at a favorable price or time.

**Foreign and Emerging Market Securities Risk.** Foreign investments may carry risks associated with investing outside the United States, such as currency fluctuation, economic or financial instability, lack of timely or reliable financial information or unfavorable political or legal developments. Those risks are increased for investments in emerging markets.

Foreign securities include dollar-denominated foreign securities and securities purchased directly on foreign exchanges. Foreign securities may be subject to more risks than U.S. domestic investments. These additional risks may potentially include lower liquidity, greater price volatility and risks related to adverse political, regulatory, market or economic developments. Foreign companies also may be subject to significantly higher levels of taxation than U.S. companies, including potentially confiscatory levels of taxation, thereby reducing the earnings potential of such foreign companies. Because there is usually less supervision and governmental regulation of foreign exchanges, brokers and dealers than there is in the United States, the Fund may experience settlement difficulties or delays not usually encountered in the United States.

In addition, amounts realized on sales of foreign securities may be subject to high and potentially confiscatory levels of foreign taxation and withholding when compared to comparable transactions in U.S. securities. The Fund will generally not be eligible to pass through to shareholders any U.S. federal income tax credits or deductions with respect to foreign taxes paid unless it meets certain requirements regarding the percentage of its total assets invested in foreign securities. Investments in foreign securities involve exposure to fluctuations in foreign currency exchange rates. Such fluctuations may reduce the value of the investment. Foreign investments are also subject to risks including potentially higher withholding and other taxes, trade settlement, custodial, and other operational risks and less stringent investor protection and disclosure standards in certain foreign markets. In addition, foreign markets can and often do perform differently from U.S. markets.

**Futures Risk.** The value of a futures contract tends to increase and decrease in correlation with the value of the underlying instrument. Risks of futures contracts may arise from an imperfect correlation between movements in the price of the futures and the price of the underlying instrument. The Fund's use of futures contracts (and related options) exposes the Fund to leverage risk because of the small margin requirements relative to the value of the futures contract. A relatively small market movement will have a proportionately larger impact on the funds that the Fund has deposited or will have to deposit with a broker to maintain its futures position. Leverage can lead to large losses as well as gains. While futures contracts are generally liquid instruments, under certain market conditions they may become illiquid. Futures exchanges may impose daily or intraday price change limits and/or limit the volume of trading. Additionally, government regulation may further reduce liquidity through similar trading restrictions. As a result, the Fund may be unable to close out its futures contracts at a time that is advantageous. The price of futures can be highly volatile; using them could lower total return, and the potential loss from futures could exceed the Fund's initial investment in such contracts.

**Government Sponsored Entities Risk.** Securities issued or guaranteed by government-sponsored entities may not be guaranteed or insured by the United States Government, and may only be supported by the credit of the issuing agency.

**High-Yield Securities Risk.** Fixed income securities receiving below investment grade ratings (i.e., "junk bonds") may have speculative characteristics, and, compared to higher-grade securities, may have a weakened capacity to make principal and interest payments in economic conditions or other circumstances. High-yield, high risk, and lower-rated securities are subject to additional risk factors due to the speculative nature of these securities, such as increased possibility of default, decreased liquidity, and fluctuations in value due to public perception of the issuer of such securities. These bonds are almost always uncollateralized and subordinate to other debt that an issuer may have outstanding. In addition, both individual high-yield securities and the entire high-yield bond market can experience sharp price swings due to a variety of factors, including changes in economic forecasts, stock market activity, large sustained sales by major investors, or, a higher profile default.

**Initial Public Offering Risk.** The Fund may purchase securities of companies that are offered pursuant to an IPO. The risk exists that the market value of IPO shares will fluctuate considerably due to factors such as the absence of a prior public market, unseasoned trading, the small number of shares available for trading and limited information about the issuer. The purchase of IPO shares may involve high transaction costs. IPO shares are subject to market risk and liquidity risk. When the Fund's asset base is small, a significant portion of the Fund's performance could be attributable to investments in IPOs, because such investments would have a magnified impact on the Fund. As the Fund's assets grow, the effect of the Fund's investments in IPOs on the Fund's performance probably will decline, which could reduce the Fund's performance.

**Interest Rate Risk.** Bond prices generally rise when interest rates decline and decline when interest rates rise. The longer the duration of a bond, the more a change in interest rates affects the bond's price. Short-term and long-term interest rates may not move the same amount and may not move in the same direction. It is likely there will be less governmental action in the near future to maintain low interest rates, or that governmental actions will be less effective in maintaining low interest rates. The negative impact on fixed income securities from the resulting rate increases for that and other reasons could be swift and significant, including falling market values and reduced liquidity. Substantial redemptions from bond and other income funds may worsen that impact. Other types of securities also may be adversely affected from an increase in interest rates.

**Large Companies Risk.** The securities of large capitalization companies may underperform other segments of the market because such companies may be less responsive to competitive challenges and opportunities, such as changes in technology and consumer tastes. Large market capitalization companies may be unable to attain or maintain the high growth rate of successful smaller companies, especially during extended periods of economic expansion.

**Leverage and Short Sales Risk.** Subject to certain limitations, the Fund may use leverage in connection with its investment activities and may effect short sales of securities. These investment practices involve special risks. Leverage is the practice of borrowing money to purchase securities. If the securities decrease in value, the Fund will suffer a greater loss than would have resulted without the use of leverage. The use of leverage may further cause the Fund to liquidate portfolio positions when it would not be advantageous to do so in order to satisfy its obligations or to meet collateral segregation requirements. Additionally, money borrowed will be subject to certain costs, such as commitment fees and the cost of maintaining minimum average balances, as well as interest. Unless the income and capital appreciation, if any, on securities acquired with borrowed funds exceed the costs of borrowing, the use of leverage will diminish the investment performance of the Fund.

A short sale is the sale by the Fund of a security that it does not own in anticipation of purchasing the same security in the future at a lower price to close the short position. A short sale will be successful if the price of the shorted security decreases. However, if the underlying security goes up in price during the period in which the short position is outstanding, the Fund will realize a loss. The risk on a short sale is unlimited because the Fund must buy the shorted security at the higher price to complete the transaction. Therefore, short sales may be subject to greater risks than investments in long positions. With a long position, the maximum sustainable loss is limited to the amount paid for the security plus the transaction costs, whereas there is no maximum attainable price of the shorted

security. The Fund would also incur increased transaction costs associated with selling securities short. In addition, if the Fund sells securities short, it must maintain a segregated account with its custodian containing cash or high-grade securities equal to (i) the greater of the current market value of the securities sold short or the market value of such securities at the time they were sold short, less (ii) any collateral deposited with the Fund's broker (not including the proceeds from the short sales). The Fund may be required to add to the segregated account as the market price of a shorted security increases. As a result of maintaining and adding to its segregated account, the Fund may maintain higher levels of cash or liquid assets (for example, U.S. Treasury bills, repurchase agreements, high quality commercial paper and long equity positions) for collateral needs thus reducing its overall managed assets available for trading purposes. In lieu of maintaining cash or high-grade securities in a segregated account to cover the Fund's short sale obligations, the Fund may earmark cash or high-grade securities on the Fund's records or hold offsetting positions.

**Management Risk.** The skill of the Adviser will play a significant role in the Fund's ability to achieve its investment objective. The Fund's ability to achieve its investment objective depends on the investment skill and ability of the Adviser and on its ability to correctly identify economic trends. In addition, the Fund's ability to achieve its investment objective depends on the Adviser's ability to select investments, particularly in volatile markets. The Adviser could be incorrect in its analysis of industries, companies' projected dividends and growth rates and the relative attractiveness of investments.

**Market Risk.** The Fund is designed for long-term investors who can accept the risks of investing in a portfolio with significant equity holdings. Equity holdings tend to be more volatile than other investment choices such as bonds and money market instruments. The value of the Fund's shares will fluctuate as a result of the movement of the overall stock market or of the value of the individual securities held by the Fund, and you could lose money.

**Master Limited Partnership Risk.** To the extent that an MLP's interests are all in a particular industry, the MLP will be negatively impacted by economic events adversely impacting that industry. The risks of investing in a MLP are generally those involved in investing in a partnership as opposed to a corporation. For example, state law governing partnerships is often less restrictive than state law governing corporations. Accordingly, there may be fewer protections afforded to investors in a MLP than investors in a corporation. For example, investors in MLPs may have limited voting rights or be liable under certain circumstances for amounts greater than the amount of their investment. In addition, an MLP may be taxed, contrary to its intention, as a corporation, resulting in decreased returns.

**Mortgage-Related and Other Asset-Backed Securities Risk.** Mortgage-related and other asset-backed securities often involve risks that are different from or more acute than risks associated with other types of debt instruments. Generally, rising interest rates tend to extend the duration of fixed rate mortgage-related securities, making them more sensitive to changes in interest rates. As a result, in a period of rising interest rates, if the Fund holds mortgage-related securities, it may exhibit additional volatility. This is known as extension risk. In addition, adjustable and fixed rate mortgage-related securities are subject to prepayment risk. When interest rates decline, borrowers may pay off their mortgages sooner than expected. This can reduce the returns of the Fund because it may have to reinvest that money at the lower prevailing interest rates. The risk of default is generally higher in mortgage-related investments that include sub-prime mortgages. Sub-prime borrowers typically have weakened credit histories that include payment delinquencies, and possibly more severe problems such as charge-offs, judgments and bankruptcies. They may also display reduced repayment capacity as measured by credit scores, debt-to-income ratios, or other criteria that may encompass borrowers with incomplete credit histories. The Fund's investments in other asset-backed securities are subject to risks similar to those associated with mortgage-related securities, as well as additional risks associated with the nature of the assets and the servicing of those assets.

**Options Risk.** Purchasing and writing put and call options are highly specialized activities and entail greater than ordinary investment risks. The Fund may not fully benefit from or may lose money on an option if changes in its value do not correspond as anticipated to changes in the value of the underlying securities. If the Fund is not able to sell an option held in its portfolio, it would have to exercise the option to realize any profit and would incur transaction costs upon the purchase or sale of the underlying securities. Ownership of options involves the payment of premiums, which may adversely affect the Fund's performance. To the extent that the Fund invests in over-the-counter options, the Fund may be exposed to counterparty risk.

**Portfolio Turnover Risk.** The Fund may sell securities without regard to the length of time they have been held to take advantage of new investment opportunities, when the Adviser feels either the securities no longer meet its investment criteria or the potential for capital appreciation has lessened, or for other reasons. The Fund's portfolio turnover rate may vary from year to year. A high portfolio turnover rate (100% or more) increases the Fund's transaction costs (including brokerage commissions and dealer costs), which would adversely impact the Fund's performance. Higher portfolio turnover may result in the realization of more short-term capital gains than if the Fund had lower portfolio turnover. The turnover rate will not be a limiting factor, however, if the Adviser considers portfolio changes appropriate.

**Preferred Stock Risk.** The value of preferred stocks may decline due to general market conditions that are not specifically related to a particular company or to factors affecting a particular industry or industries. Preferred stocks may be more volatile than fixed income securities and are more correlated with the issuer's underlying common stock than fixed income securities. While most preferred stocks pay a dividend, the Fund may purchase preferred stock where the issuer has omitted, or is in danger of omitting, payment of its dividend.

**Real Estate and REIT Concentration Risk.** The value and performance of REITs depends on how well the property owned by the REIT is managed. A REIT's performance also depends on that company's ability to finance property purchases and renovations and manage its cash flows. Since the Fund will concentrate its portfolio in REITs and other commercial real estate-oriented companies, the Fund's performance will be exposed to the same risks that are associated with the direct ownership of real estate. Some of the risks involved in the real estate market include a general decline in the value of real estate, fluctuations in rental income, changes in interest rates, increases in property taxes, increased operating costs, overbuilding, changes in zoning laws, and changes in consumer demand for real estate. In recent years, the real estate industry has been subject to substantial declines in value.

**Rule 144A Securities Risk.** The market for Rule 144A securities typically is less active than the market for publicly-traded securities. Rule 144A securities carry the risk that the trading market may not continue and the Fund might be unable to dispose of these securities promptly or at reasonable prices and might thereby experience difficulty satisfying redemption requirements.

**Sector Risk.** To the extent the Fund invests a significant portion of its assets in the securities of companies in the same sector of the market, the Fund is more susceptible to economic, political, regulatory and other occurrences influencing those sectors.

**Small and Medium Companies Risk.** Investing in securities of small and medium capitalization companies may involve greater volatility than investing in larger and more established companies because small and medium capitalization companies can be subject to more abrupt or erratic share price changes than larger, more established companies. Small and medium capitalization companies may have limited product lines, markets or financial resources and their management may be dependent on a limited number of key individuals. Securities of those companies may have limited market liquidity and their prices may be more volatile.

**Swaps Risk.** In a swap transaction, one party agrees to pay the other party an amount equal to the return, based upon an agreed-upon notional value, of a defined underlying asset or a non-asset reference (such as an index) during a specified period of time. In return, the other party would make periodic payments based on a fixed or variable interest rate or on the return from a different underlying asset or non-asset reference based upon an agreed-upon notional value. Swaps could result in losses if the underlying asset or reference does not perform as anticipated. The value of swaps, like many other derivatives, may move in unexpected ways and may result in losses for the Fund. Such transactions can have the potential for unlimited losses. Such risk is heightened in the case of swap transactions involving short exposures. Swaps can involve greater risks than direct investment in the underlying asset, because swaps may be leveraged (creating leverage risk in that the Fund's exposure and potential losses are greater than the amount invested) and are subject to counterparty risk (the risk that the counterparty to the instrument will not perform or be able to perform in accordance with the terms of the instrument), hedging risk (the risk that a hedging strategy may not eliminate the risk that it is intended to offset), pricing risk (swaps may be difficult to value) and liquidity risk (it may not be possible to liquidate a swap position at an advantageous time or price), each of which may result in significant and unanticipated losses to the Fund.

### **Disclosure of Portfolio Holdings**

Currently, disclosure of the Fund's holdings is required to be made quarterly within 60 days of the end of each fiscal quarter in the annual report and semi-annual report to Fund shareholders and in the quarterly holdings report on Form N-Q. The annual and semi-annual reports are available by contacting the Orinda Income Opportunities Fund, c/o U.S. Bank Global Fund Services, P.O. Box 701, Milwaukee, Wisconsin 53201-0701, or calling 1-855-467-4632 (855-4ORINDA), on the Fund's website at [www.orindafunds.com](http://www.orindafunds.com), and on the SEC's website at [www.sec.gov](http://www.sec.gov). A further description of the Company's policies and procedures with respect to the disclosure of the Fund's portfolio securities is available in the Fund's SAI.

## **MANAGEMENT OF THE FUND**

### **Investment Adviser**

Orinda Asset Management LLC provides investment management and investment advisory services to investment companies and other pooled investment vehicles.

Subject to the general supervision of the Board, the Adviser manages the Fund's portfolio and is responsible for the selection and management of all portfolio investments of the Fund in accordance with the Fund's investment objective and policies.

The Adviser is located at 3390 Mt. Diablo Boulevard, Suite 250, Lafayette, CA 94549. The Adviser is an SEC-registered investment advisory firm formed in 2010. As of September 30, 2019, the Adviser had approximately \$292 million in assets under management.

For its services to the Fund, the Adviser is entitled to receive a monthly advisory fee under the advisory agreement computed at an annual rate of 1.00% of the Fund's average daily net assets. For the fiscal year end August 31, 2019, the Adviser received a management fee of 1.00% of the Fund's average daily net assets. Until December 31, 2020, the Adviser has agreed to waive its fees to the extent necessary to maintain annualized expense ratios for the Class I, Class A and Class D shares of average daily net assets of 1.40%, 1.70%, and 2.40%, respectively (excluding certain items discussed below). In determining the Adviser's obligation to waive advisory fees and/or reimburse expenses, the following expenses are not taken into account and could cause the Fund's net annualized expense ratio to exceed the applicable expense limitation: acquired fund fees and expenses, short sale dividend expenses, brokerage commissions, extraordinary items, interest and taxes. There can be no assurance that the Adviser will continue such waiver for the Fund after December 31, 2020.

If at any time the Fund's total annual Fund operating expenses (excluding acquired fund fees and expenses, short sale dividend expense, brokerage commissions, extraordinary items, interest or taxes) for a year are less than 1.40%, 1.70%, and 2.40%, for the Fund's Class I, Class A and Class D Shares, respectively, the Adviser is entitled to reimbursement by the Fund of the forgone advisory fees waived and other payments remitted by the Adviser to the Fund within three years from the date on which such waiver or reimbursement was made provided such reimbursement does not cause the Fund to exceed expense limitations that were in effect at the time of the waiver or reimbursement.

A discussion regarding the basis for the Board's approval of the Fund's advisory agreement with the Adviser is available in the Fund's annual report to shareholders dated August 31, 2019.

### **Portfolio Managers**

Paul Gray and Ian Goltra serve as co-portfolio managers for the Fund.

Paul Gray brings over 25 years of investment experience to the Adviser. He is responsible for the Adviser's research, investment strategy, investment process, and overall portfolio management of the real estate and income products. From June 2009 through February 2013, Mr. Gray served as a portfolio manager at Forward Management LLC managing three private hedge funds. From 1994 to June 2009, Mr. Gray served as a portfolio manager and acted as co-chief investment officer for Kensington Investment Group, Inc., where he directed the firm's research and co-directed the investment strategy for the firm.

Ian Goltra is jointly responsible for the Fund's investment research, investment strategy, investment process and overall investment management of the Fund. From March 2010 to July 2016, Mr. Goltra served as a portfolio manager at Salient Partners (formerly, Forward Management LLC) after joining the company as a Senior Analyst in June 2009. Mr. Goltra served as Lead Portfolio Manager to the Salient Tactical Real Estate Fund (previously the "Forward Real Estate Long/Short Fund") and co-led the portfolio management team of the Salient Real Estate Fund (previously the "Forward Real Estate Fund"), later serving as its Lead Manager.

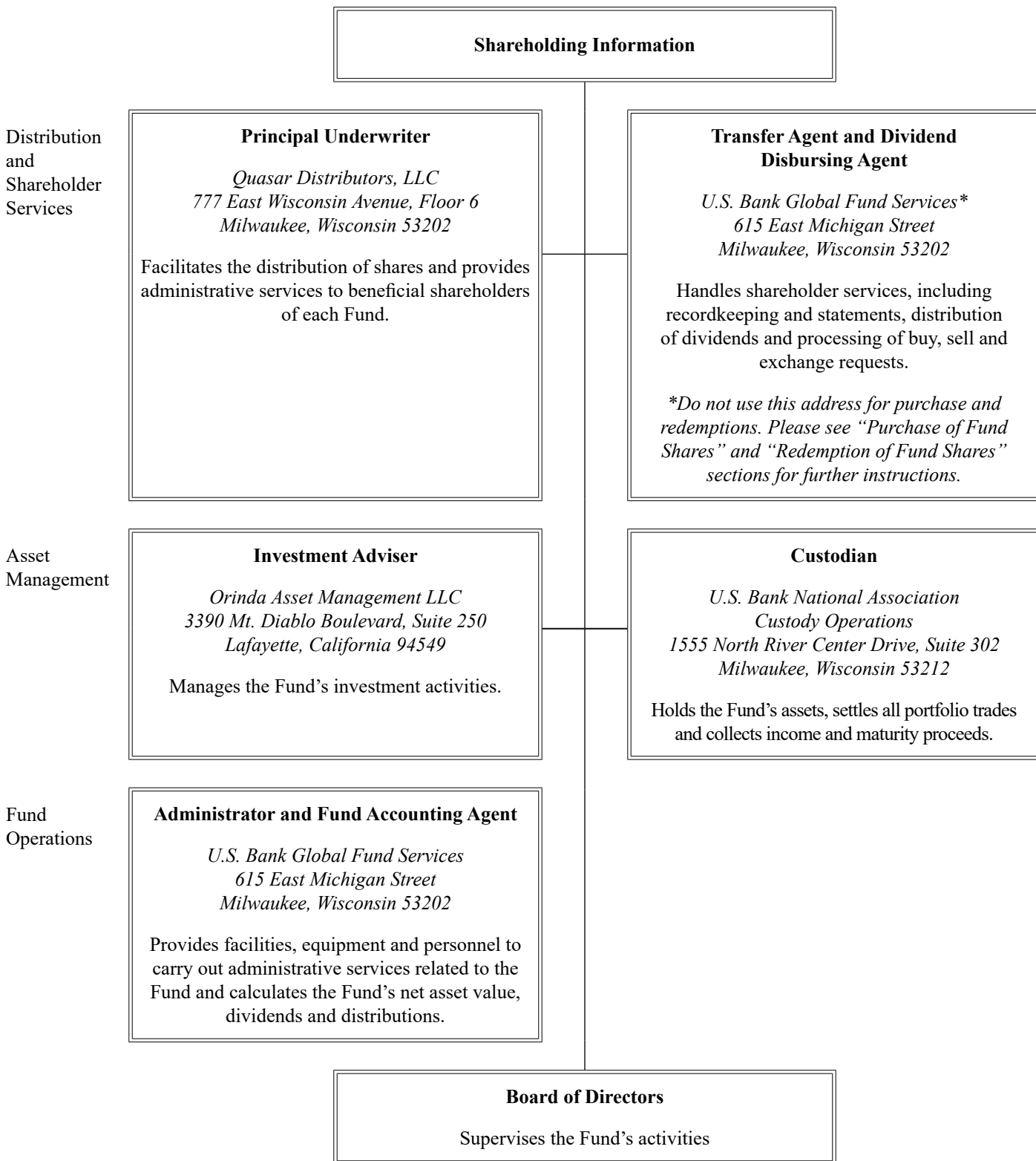
The SAI provides additional information about the portfolio managers' compensation, other accounts managed by the portfolio managers and the portfolio managers' ownership of shares in the Fund.

### **Marketing Arrangements**

The Adviser or its affiliates may pay additional compensation, out of profits derived from the Adviser's management fee and not as an additional charge to the Fund, to certain financial institutions (which may include banks, securities dealers and other industry professionals) for the sale and/or distribution of Fund shares or the retention and/or servicing of Fund investors and Fund shares ("revenue sharing"). These payments are in addition to any distribution or servicing fees payable under a 12b-1 distribution and/or service plan of the Fund, any record keeping or sub-transfer agency fees payable by the Fund, or other fees described in the fee table or elsewhere in this Prospectus or the SAI. Examples of "revenue sharing" payments include, but are not limited to, payments to financial institutions for "shelf space" or access to a third party platform or fund offering list or other marketing programs, including, but not limited to, inclusion of the Fund on preferred or recommended sales lists, mutual fund "supermarket" platforms and other formal sales programs; granting the Adviser access to the financial institution's sales force; conferences and meetings; assistance in training and educating the financial institution's personnel; and obtaining other forms of marketing support. The level of revenue sharing payments made to financial institutions may be a fixed fee or based upon one or more of the following factors: gross sales, current assets and/or number of accounts of the Fund attributable to the financial institution, or other factors as agreed to by the Adviser and the financial institution or any combination thereof. The amount of these revenue sharing payments is determined at the discretion of the Adviser from time to time, may be substantial, and may be different for different financial institutions depending upon the services provided by the financial institution. Such payments may provide an incentive for the financial institution to make shares of the Fund available to its customers and may allow the Fund greater access to the financial institution's customers.



**Other Service Providers.** The following chart shows the Fund’s service providers and includes their addresses and principal activities.



# SHAREHOLDER INFORMATION

## Pricing of Fund Shares

Class I, Class A and Class D shares of the Fund (“Shares”) are priced at their net asset value (“NAV”). The NAV per share of the Fund is calculated as follows:

$$\text{NAV} = \frac{\text{Value of Assets Attributable to a Class} - \text{Value of Liabilities Attributes to the same Class}}{\text{Number of Outstanding shares of the Class}}$$

The Fund’s NAV is calculated once daily at the close of regular trading hours on the NYSE (generally 4:00 p.m. Eastern time) on each day the NYSE is open. The NYSE is generally open Monday through Friday, except national holidays. Due to the fact that different expenses are charged to the Class I shares, Class A shares, and Class D shares of the Fund, the NAV of the three classes of the Fund may vary. The Fund will effect purchases and redemptions of Shares at the NAV next calculated after receipt by the Transfer Agent of your purchase order or redemption request in good order (as described below). If the Fund holds securities that are primarily listed on non-U.S. exchanges, the NAV of the Shares may change on days when shareholders will not be able to purchase or redeem the Shares.

The Fund’s equity securities listed on any national or foreign exchange market system will be valued at the last sale price, except for the National Association of Securities Dealers Automatic Quotation System (“NASDAQ”). Equity securities listed on the NASDAQ will be valued at the official closing price. Equity securities traded in the over-the-counter market are valued at their closing prices. If there were no transactions on that day, equity securities will be valued at the mean of the last bid and ask prices prior to the market close. Fixed income securities are valued using an independent pricing service, which considers such factors as security prices, yields, maturities and ratings, and are deemed representative of market value at the close of the market. When prices are not available from such services or are deemed to be unreliable, securities may be valued by dealers who make markets in such securities. Foreign securities, currencies and other securities denominated in foreign currencies are translated into U.S. dollars at the exchange rate of such currencies against the U.S. dollar provided by a pricing service. All assets denominated in foreign currencies will be converted into U.S. dollars at the exchange rates in effect at the time of valuation. If the Fund holds foreign equity securities, the calculation of the Fund’s NAV will not occur at the same time as the determination of the value of the foreign equities securities in the Fund’s portfolio, since these securities are traded on foreign exchanges.

Investments in other open-end investment companies are valued based on the NAV of those investment companies (which may use fair value pricing as discussed in their prospectuses). Investments in ETFs, REITs and closed-end investment companies will be valued at their market price.

If market quotations are unavailable or deemed unreliable by the Fund’s administrator, in consultation with the Adviser, securities will be valued by the Adviser in accordance with procedures adopted by the Board and under the Board’s ultimate supervision. In addition, the prices of foreign securities may be affected by events that occur after the close of a foreign market but before the Fund prices its Shares. In such instances, a foreign security may be fair valued in accordance with procedures adopted by the Board. Relying on prices supplied by pricing services or dealers or using fair valuation involves the risk that the values used by the Fund to price its investments may be higher or lower than the values used by other investment companies and investors to price the same investments.

## Market Timing

In accordance with the policy adopted by its Board, the Company discourages and does not accommodate market timing and other excessive trading practices. Purchases should be made with a view to longer-term investment only. Excessive short-term (market timing) trading practices may disrupt portfolio management strategies, increase brokerage and administrative costs, harm Fund performance and result in dilution in the value of Shares held by long-term shareholders. The Company and the Adviser reserve the right to (i) reject a purchase or exchange order, (ii) delay payment of immediate cash redemption proceeds for up to seven calendar days, (iii) revoke a shareholder’s privilege to purchase Shares (including exchanges), or (iv) limit the amount of any exchange involving the purchase of Shares. An investor may receive notice that their purchase order or exchange has been rejected after the day the order is placed or after acceptance by a financial intermediary. It is currently expected that a shareholder would receive notice that its purchase order or exchange has been rejected within 48 hours after such purchase order or exchange has been received by the Company in good order. The Company and the Adviser will not be liable for any loss resulting from rejected purchase orders. To minimize harm to the Company and its shareholders (or the Adviser), the Company (or the Adviser) will exercise its right if, in the Company’s (or the Adviser’s) judgment, an investor has a history of excessive trading or if an investor’s trading, in the judgment

of the Company (or the Adviser), has been or may be disruptive to the Fund. No waivers of the provisions of the policy established to detect and deter market timing and other excessive trading activity are permitted that would harm the Fund and its shareholders or would subordinate the interests of the Fund and its shareholders to those of the Adviser or any affiliated person or associated person of the Adviser.

Pursuant to the policy adopted by the Board, the Adviser has developed criteria that it uses to identify trading activity that may be excessive. If, in its judgment, the Adviser detects excessive, short-term trading, the Adviser may reject or restrict a purchase request and may further seek to close an investor's account with the Fund.

If necessary, the Company may prohibit additional purchases of Shares by a financial intermediary or by certain customers of the financial intermediary. Financial intermediaries may also monitor their customers' trading activities in the Fund. The criteria used by intermediaries to monitor for excessive trading may differ from the criteria used by the Company. If a financial intermediary fails to enforce the Company's excessive trading policies, the Company may take certain actions, including terminating the relationship.

There is no assurance that the Fund will be able to identify market timers, particularly if they are investing through intermediaries.

### **Purchase of Fund Shares**

Shares representing interests in the Fund are offered continuously for sale by Quasar Distributors, LLC (the "Distributor"). Shares of the Fund are available for purchase by investors who meet the investment minimums described below under "General."

The Board has approved a Distribution Agreement and adopted Plans of Distribution for Class A and Class D shares (the "Plans") pursuant to Rule 12b-1 under the Investment Company Act of 1940, as amended (the "1940 Act"). Under the Plans, the Distributor is entitled to receive from the Fund a distribution fee with respect to Class A and Class D Shares of the Fund, which is accrued daily and paid monthly, of up to 0.25% on an annualized basis of the average daily net assets of the Class A Shares, and of up to 1.00% on an annualized basis of the average daily net assets of the Class D Shares. The actual amount of such compensation under the Plans is agreed upon by the Board and by the Distributor. Because these fees are paid out of the Fund's assets on an ongoing basis, over time these fees will increase the cost of your investment in Class A Shares and Class D Shares and may cost you more than paying other types of sales charges.

Amounts paid to the Distributor under the Plans may be used by the Distributor to cover expenses that are related to (i) the sale of Class A Shares and Class D Shares, (ii) ongoing servicing and/or maintenance of the accounts of Class A and Class D shareholders, and (iii) sub-transfer agency services, sub-accounting services or administrative services related to the sale of Class A Shares and Class D Shares, all as set forth in the Plans. Under the Plan, for Class D Shares, 0.75% of the fee may be used for marketing and distribution expenses and the remaining 0.25% may be used for shareholder servicing expenses. Ongoing servicing and/or maintenance of the accounts of Class A and Class D shareholders may include updating and mailing prospectuses and shareholder reports, responding to inquiries regarding shareholder accounts and acting as agent or intermediary between shareholders and the Fund or its service providers. The Distributor may delegate some or all of these functions to Service Organizations. See "Purchases Through Intermediaries" below.

The Plans obligate the Fund, during the period it is in effect, to accrue and pay to the Distributor on behalf of the Class A Shares and Class D Shares the fee agreed to under the Distribution Agreement. Payments under the Plans are not tied exclusively to expenses actually incurred by the Distributor, and the payments may exceed distribution expenses actually incurred.

***Purchases Through Intermediaries.*** Shares of the Fund may also be available through certain brokerage firms, financial institutions and other industry professionals (collectively, "Service Organizations"). Certain features of the Shares, such as the initial and subsequent investment minimum and certain trading restrictions, may be modified or waived by Service Organizations. Service Organizations may impose transaction or administrative charges or other direct fees, which charges and fees would not be imposed if Shares are purchased directly from the Company. Therefore, you should contact the Service Organization acting on your behalf concerning the fees (if any) charged in connection with a purchase or redemption of Shares and should read this Prospectus in light of the terms governing your accounts with the Service Organization. [Appendix A](#) of this Prospectus provides more information about the special sales charge arrangements through Service organizations, and the circumstances in which sales charges may be reduced or waived for certain investors and certain types of purchases or redemptions. Service Organizations will be responsible for promptly transmitting client or customer purchase and redemption orders to the Company in accordance with their agreements with the Company or its agent and with clients or customers. Service Organizations or, if applicable, their designees that have entered into agreements with the Company or its agent may enter confirmed purchase orders on behalf of clients and customers, with payment to follow no later than the Company's pricing on the following business day. If payment is not received by such time, the Service Organization could be held liable for resulting fees or losses. The Company will be deemed to have received a purchase or redemption order when a Service Organization, or, if applicable, its authorized designee, accepts a purchase or redemption order

in good order if the order is actually received by the Company in good order not later than the next business morning. If a purchase order is not received by the Fund in good order, the Transfer Agent will contact the financial intermediary to determine the status of the purchase order. Orders received by the Company in good order will be priced at the Fund's NAV, plus any applicable sales charge, next computed after they are deemed to have been received by the Service Organization or its authorized designee.

For administration, sub-accounting, transfer agency and/or other services, the Adviser or its affiliates may pay Service Organizations and certain recordkeeping organizations a fee (the "Service Fee") relating to the average annual NAV of accounts with the Company maintained by such Service Organizations or recordkeepers. The Service Fee payable to any one Service Organization is determined based upon a number of factors, including the nature and quality of services provided, the operations processing requirements of the relationship and the standardized fee schedule of the Service Organization or recordkeeper.

In addition to fees that the Fund may pay to a Service Organization pursuant to the Plans, the Fund may enter into agreements with Service Organizations pursuant to which the Fund will pay a Service Organization for networking, sub-transfer agency, sub-administration and/or sub-accounting services. These payments are generally based on either (1) a percentage of the average daily net assets of Fund shareholders serviced by the Service Organization or (2) a fixed dollar amount for each account serviced by the Service Organization. The aggregate amount of these payments may be substantial.

Class I Shares may also be available on brokerage platforms of firms that have agreements with the Company to offer such shares when acting solely on an agency basis for the purchase or sale of such shares. If you transact in Class I Shares through one of these programs, you may be required to pay a commission and/or other forms of compensation to the broker.

**General.** You may also purchase Shares of the Fund at the NAV per share next calculated, plus any applicable sales charge, after your order is received by the Transfer Agent in good order as described below. The Fund's NAV is calculated once daily at the close of regular trading hours on the NYSE (generally 4:00 p.m. Eastern time) on each day the NYSE is open. After an initial purchase is made, the Transfer Agent will set up an account for you on the Company records. The minimum initial investment in Class I Shares of the Fund is \$100,000 and there is no minimum subsequent investment amount. The minimum initial investment in Class A and Class D Shares of the Fund is \$5,000 and there is no minimum subsequent investment amount. The minimum initial and subsequent investment requirements may be reduced or waived from time to time. For purposes of meeting the minimum initial purchase, purchases by clients that are part of endowments, foundations or other related groups may be combined. You can purchase Shares of the Fund only on days the NYSE is open and through the means described below. Shares may be purchased by principals and employees of the Adviser and its subsidiaries and by their spouses and children either directly or through any trust that has the principal, employee, spouse or child as the primary beneficiaries, their individual retirement accounts, or any pension and profit-sharing plan of the Adviser and its subsidiaries without being subject to the minimum investment limitations.

**Initial Investment By Mail.** Subject to acceptance by the Fund, an account may be opened by completing and signing an account application and mailing it to the Transfer Agent at the address noted below, together with a check payable to the Orinda Income Opportunities Fund.

*Regular Mail:*

Orinda Income Opportunities Fund  
c/o U.S. Bank Global Fund Services  
P.O. Box 701  
Milwaukee, Wisconsin 53201-0701

*Overnight Mail:*

Orinda Income Opportunities Fund  
c/o U.S. Bank Global Fund Services  
615 East Michigan Street, 3rd Floor  
Milwaukee, Wisconsin 53202

The Fund does not consider the U.S. Postal Service or other independent delivery services to be its agents. Therefore, deposit in the mail or with such services, or receipt at the Transfer Agent's post office box, of purchase orders or redemption requests does not constitute receipt by the transfer agent of the Fund. Receipt of purchase orders or redemption requests is based on when the order is received at the Transfer Agent's offices.

All checks must be in U.S. Dollars drawn on a domestic bank. The Fund will not accept payment in cash or money orders. The Fund does not accept post-dated checks or any conditional order or payment. To prevent check fraud, the Fund will not accept third party checks, Treasury checks, credit card checks, traveler's checks or starter checks for the purchase of shares.

Shares will be purchased at the NAV next computed, plus any applicable sales charge, after the time the application and funds are received in proper order and accepted by the Fund. The Transfer Agent will charge a \$25 fee against a shareholder's account, in addition to any loss sustained by the Fund, for any payment that is returned. It is the policy of the Fund not to accept applications under certain circumstances or in amounts considered disadvantageous to shareholders. The Fund reserves the right to reject any application.

**Initial Investment By Wire.** If you are making your first investment in the Fund, before you wire funds, the Transfer Agent must have a completed account application. You may mail or overnight deliver your account application to the Transfer Agent. Upon receipt of your completed account application, the Transfer Agent will establish an account for you. The account number assigned will be required as part of the instruction that should be provided to your bank to send the wire. Your bank must include both the name of the Fund you are purchasing, the account number, and your name so that monies can be correctly applied. Your bank should transmit funds by wire to:

U.S. Bank, N.A.  
777 East Wisconsin Avenue  
Milwaukee, WI 53202  
ABA #075000022

**Credit:**

U.S. Bancorp Fund Services, LLC  
Account #112-952-137

**Further Credit:**

Orinda Income Opportunities Fund  
(shareholder registration)  
(shareholder account number)

Wired funds must be received prior to 4:00 p.m. Eastern time to be eligible for same day pricing. The Fund and U.S. Bank, N.A. are not responsible for the consequences of delays resulting from the banking or Federal Reserve wire system, or from incomplete wiring instructions.

**For Subsequent Investments By Wire.** Before sending your wire, please contact the Transfer Agent to advise them of your intent to wire funds. This will ensure prompt and accurate credit upon receipt of your wire.

**Additional Investments.** Additional investments may be made at any time (for any amount) by purchasing Shares at the NAV, plus any applicable sales charge, of the Fund by mailing a check to the Transfer Agent at the address noted under “Initial Investment by Mail” (payable to Orinda Income Opportunities Fund) or by wiring monies as outlined under “Initial Investment by Wire.” Notification must be given to the Transfer Agent at 1-855-467-4632 (855-4ORINDA) prior to 4:00 p.m., Eastern time, on the wire date. Initial and additional purchases made by check or electronic funds transfer through the Automated Clearing House (“ACH”) network cannot be redeemed until payment of the purchase has been collected. This may take up to 15 calendar days from the date of purchase.

Investors may purchase additional shares of the Fund by calling 1-855-467-4632 (855-4ORINDA). If you accepted this option on your account application, and your account has been open for at least 7 business days, telephone orders will be accepted via electronic funds transfer from your bank account through the ACH network. You must have banking information established on your account prior to making a purchase. If your order is received prior to 4 p.m. Eastern time, your shares will be purchased at the net asset value, plus any applicable sales charge, calculated on the day your order is placed.

Telephone trades must be received by or prior to market close. During periods of high market activity, shareholders may encounter higher than usual call waits. Please allow sufficient time to place your telephone transaction.

**Automatic Investment Plan.** Once your account has been opened with the initial minimum investment, you may make additional purchases at regular intervals through an automatic investment plan (the “Automatic Investment Plan”). The Automatic Investment Plan provides a convenient method to have monies deducted from your bank account, for investment into the Fund, on a monthly, quarterly, semi-annual, or annual basis. In order to participate in the Automatic Investment Plan, each purchase must be in the amount of \$100 or more, and your financial institution must be a member of the ACH network. If your bank rejects your payment, the Fund’s transfer agent will charge a \$25 fee to your account. To begin participating in the Automatic Investment Plan, please complete the Automatic Investment Plan section on the account application or call the Fund’s transfer agent at 1-855-467-4632 (855-4ORINDA) for instructions. Any request to change or terminate your Automatic Investment Plan should be submitted to the Transfer Agent five (5) days prior to effective date.

**Retirement Plans.**

The Fund offers prototype documents for a variety of retirement accounts for individuals and small businesses. Please call 1-855-467-4632 (855-4ORINDA) for information on:

- Individual Retirement Plan, including Traditional IRAs and Roth IRAs

- Small Business Retirement Plans, including Simple IRAs and SEP IRAs
- Coverdell Education Savings Accounts

There may be special distribution requirements for a retirement account, such as required distributions or mandatory Federal income tax withholding. For more information, call the number listed above. You may be charged a \$15 annual account maintenance fee for each retirement account up to a maximum of \$30 annually and a \$25 fee for transferring assets to another custodian or for closing a retirement account.

**Purchases in Kind.** In certain circumstances, Shares of the Fund may be purchased “in kind” (*i.e.* in exchange for securities, rather than cash). The securities rendered in connection with an in-kind purchase must be liquid securities that are not restricted as to transfer and have a value that is readily ascertainable in accordance with the Company’s valuation procedures. Securities accepted by the Fund will be valued, as set forth in this Prospectus, as of the time of the next determination of NAV after such acceptance. Fund Shares that are issued to the investor in exchange for the securities will be determined as of the same time. All dividend, subscription, or other rights that are reflected in the market price of accepted securities at the time of valuation become the property of the Fund and must be delivered to the Fund by the investor upon receipt from the issuer. The Fund will not accept securities in exchange for its Shares unless such securities are, at the time of the exchange, eligible to be held by the Fund and satisfy such other conditions as may be imposed by the Adviser or the Company. Purchases in-kind may result in the recognition of gain or loss for federal income tax purposes on the securities transferred to the Fund.

**Other Purchase Information.** The Company reserves the right, in its sole discretion, to suspend the offering of Shares or to reject purchase orders when, in the judgment of management, such suspension or rejection is in the best interests of the Fund. Subject to the Board’s discretion, the Adviser will monitor the Fund’s total assets and may decide to close the Fund at any time to new investments or to new accounts due to concerns that a significant increase in the size of the Fund may adversely affect the implementation of the Fund’s strategy. Subject to the Board’s discretion, the Adviser may also choose to reopen a closed Fund to new investments at any time, and may subsequently close the Fund again should concerns regarding the Fund’s size recur. If the Fund closes to new investments, generally the closed Fund would be offered only to certain existing shareholders of the Fund and certain other persons, who are generally subject to cumulative, maximum purchase amounts, as follows:

- a. Fee-based advisory model programs or financial advisors who manage fee-based wrap accounts that systematically trade in and out of the closed Fund based on model portfolio allocations;
- b. Persons who already hold Shares of the closed Fund directly or through accounts maintained by brokers by arrangement with the Company;
- c. Existing and future clients of registered investment advisers and planners whose clients already hold Shares of the closed Fund on transaction fee and non-transaction fee platforms;
- d. Existing and future clients of consultants whose clients already hold shares of the closed Fund;
- e. Certain financial intermediaries by arrangement with the Company;
- f. Employees of the Adviser and their spouses, parents and children;
- g. Directors of the Company; and
- h. Defined contribution retirement plans of private employers and governed by ERISA or of state and local governments.

Distributions to all shareholders of the closed Fund will continue to be reinvested unless a shareholder elects otherwise. The Adviser, subject to the Board’s discretion, reserves the right to implement other purchase limitations at the time of closing, including limitations on current shareholders.

Purchases of the Shares will be made in full and fractional shares of the Fund calculated to three decimal places.

The Adviser is authorized to waive the minimum initial and subsequent investment requirements.

Certificates for Shares will not be issued.

**Good Order.** A purchase request is considered to be in good order when the purchase request includes the name of the Fund, the dollar amount of shares to be purchased, your account application or investment stub, and a check payable to the Fund. Purchase requests not in good order may be rejected.

**Customer Identification Program.** In compliance with the USA PATRIOT Act of 2001, please note that the Transfer Agent will verify certain information on your account application as part of the Company's Anti-Money Laundering Program. As requested on the account application, you must supply your full name, date of birth, social security number and permanent street address. If you are opening the account in the name of a legal entity (e.g., partnership, limited liability company, business trust, corporation, etc.), you must also supply the identity of the beneficial owners. Mailing addresses containing only a P.O. Box will not be accepted. Applications without the required information, or without any indication that a social security or taxpayer identification number has been applied for, may not be accepted. After acceptance, to the extent permitted by applicable law or its customer identification program, the Company reserves the right (a) to place limits on transactions in any account until the identity of the investor is verified; or (b) to refuse an investment in a Company portfolio or to involuntarily redeem an investor's Shares and close an account in the event that an investor's identity is not verified. The Company and its agents will not be responsible for any loss in an investor's account resulting from the investor's delay in providing all required identifying information or from closing an account and redeeming an investor's Shares when an investor's identity cannot be verified.

### **Redemption of Fund Shares**

Normally, your investment professional will send your request to redeem Shares to the Transfer Agent. Consult your investment professional for more information. You can redeem some or all of your Fund Shares directly through the Fund only if the account is registered in your name.

You may redeem Shares of the Fund at the next NAV calculated after a redemption request is received by the Transfer Agent in good order. The Fund's NAVs are calculated once daily at the close of regular trading hours on the NYSE (generally 4:00 p.m. Eastern time) on each day the NYSE is open. You can redeem Shares only on days the NYSE is open and through the means described below.

You may redeem Shares of the Fund by mail, or, if you are authorized, by telephone. The value of Shares redeemed may be more or less than the purchase price, depending on the market value of the investment securities held by the Fund. There is generally no charge for a redemption.

**Redemption By Mail.** Your redemption requests should be addressed to Orinda Income Opportunities Fund, c/o U.S. Bank Global Fund Services, P.O. Box 701, Milwaukee, Wisconsin 53201-0701; for overnight delivery, requests should be addressed to Orinda Income Opportunities Fund, c/o U.S. Bank Global Fund Services, 615 East Michigan Street, 3rd Floor, Milwaukee, Wisconsin 53202.

The Fund does not consider the U.S. Postal Service or other independent delivery services to be its agents. Therefore, deposit in the mail or with such services, or receipt at the Transfer Agent's post office box, of purchase orders or redemption requests does not constitute receipt by the transfer agent of the Fund. Receipt of purchase orders or redemption requests is based on when the order is received at the Transfer Agent's offices.

Signature guarantees will generally be accepted from domestic banks, brokers, dealers, credit unions, national securities exchanges, registered securities associations, clearing agencies and savings associations, as well as from participants in the New York Stock Exchange Medallion Signature Program and the Securities Transfer Agents Medallion Program ("STAMP"). A notary public is not an acceptable signature guarantor.

A signature guarantee, from either a Medallion program member or a non-Medallion program member, is required in the following situations:

- If ownership is being changed on your account;
- When redemption proceeds are payable or sent to any person, address or bank account not on record;
- When a redemption is received by the Transfer Agent and the account address has changed within the last 15 calendar days;
- For all redemptions in excess of \$100,000 from any shareholder account.

In addition to the situations described above, the Fund and/or the Transfer Agent reserve the right to require a signature guarantee in other instances based on the circumstances relative to the particular situation.

Non financial transactions, including establishing or modifying certain services on an account, may require a signature guarantee, signature verification from a Signature Validation Program member, or other acceptable form of authentication from a financial institution source.

**Redemption By Telephone.** In order to utilize the telephone redemption option, you must indicate that option on your Account Application. You may then initiate a redemption of Shares in the amount of up to \$100,000 by calling the Transfer Agent at 1-855-467-4632 (855-4ORINDA).

Investors may have a check sent to the address of record, proceeds may be wired to a shareholder's bank account of record, or funds may be sent via electronic funds transfer through the ACH network, also to the bank account of record. Wires are subject to a \$15 fee paid by the investor, but the investor does not incur any charge when proceeds are sent via the ACH system.

Once a telephone transaction has been placed, it cannot be canceled or modified after the close of regular trading on the NYSE (generally, 4:00 p.m., Eastern time).

Telephone trades must be received by or prior to market close. During periods of high market activity, shareholders may encounter higher than usual call waits. Please allow sufficient time to place your telephone transaction.

Before executing an instruction received by telephone, the Transfer Agent will use reasonable procedures to confirm that the telephone instructions are genuine. The telephone call may be recorded and the caller may be asked to verify certain personal identification information. If the Fund or its agents follow these procedures, they cannot be held liable for any loss, expense or cost arising out of any telephone redemption request that is reasonably believed to be genuine. This includes fraudulent or unauthorized requests. If an account has more than one owner or authorized person, the Fund will accept telephone instructions from any one owner or authorized person.

**IRA and Other Retirement Plan Redemptions.** If you have an IRA, you must indicate on your written redemption request whether or not to withhold federal income tax. Redemption requests failing to indicate an election to have tax withheld will be subject to 10% withholding.

Shares held in IRA accounts may be redeemed by telephone at 1-855-467-4632 (855-4ORINDA). Investors will be asked whether or not to withhold taxes from any distribution.

**Involuntary Redemption.** The Fund reserves the right to redeem a shareholder's account in the Fund at any time the value of the account in the Fund falls below \$2,000 as the result of a redemption or an exchange request. Shareholders will be notified in writing that the value of their account in the Fund is less than \$2,000 and will be allowed 30 days to make additional investments before the redemption is processed.

The Fund may assert the right to redeem your shares at current NAV at any time and without prior notice if, and to the extent that, such redemption is necessary to reimburse the Fund for any loss sustained by reason of your failure to make full payment for shares of the Fund you previously purchased or subscribed for.

**Other Redemption Information.** Redemption proceeds for Shares of the Fund recently purchased by check or electronic funds transfer through the ACH network may not be distributed until payment for the purchase has been collected, which may take up to fifteen calendar days from the purchase date. Shareholders can avoid this delay by utilizing the wire purchase option.

Other than as described above, payment of the redemption proceeds will be made within seven days after receipt of an order for a redemption. The Company may suspend the right of redemption or postpone the date at times when the NYSE is closed or under any emergency circumstances as determined by the SEC. The Fund typically expects to meet redemption requests by paying out proceeds from cash or cash equivalent portfolio holdings, or by selling portfolio securities. In stressed market conditions, redemption methods may include redeeming in kind.

If the Board determines that it would be detrimental to the best interests of the remaining shareholders of the Fund to make payment wholly or partly in cash, redemption proceeds may be paid in whole or in part by an in-kind distribution of readily marketable securities held by the Fund instead of cash in conformity with applicable rules of the SEC and the Company's Policy and Procedures Related to the Processing of In-Kind Redemptions. Investors generally will incur brokerage charges on the sale of portfolio securities so received in payment of redemptions. If a shareholder receives redemption proceeds in-kind, the shareholder will bear the market risk of the securities received in the redemption until their disposition and should expect to incur transaction costs upon the disposition of the securities. The Company has elected, however, to be governed by Rule 18f-1 under the 1940 Act, so that the Fund is obligated to redeem its Shares solely in cash up to the lesser of \$250,000 or 1% of its NAV during any 90-day period for any one shareholder of the Fund.



## **Systematic Withdrawal Plan**

As another convenience, you may redeem your Fund shares through the Systematic Withdrawal Plan (“SWP”). Under the SWP, shareholders or their financial intermediaries may request that a payment drawn in a predetermined amount be sent to them on a monthly, quarterly or annual basis. In order to participate in the SWP, your account balance must be at least \$20,000 and each withdrawal amount must be for a minimum of \$100. If you elect this method of redemption, the Fund will send a check directly to your address of record or will send the payment directly to your bank account via electronic funds transfer through the ACH network. For payment through the ACH network, your bank must be an ACH member and your bank account information must be previously established on your account. The SWP may be terminated at any time by the Fund. You may also elect to terminate your participation in the SWP by communicating in writing or by telephone to the Transfer Agent no later than five days before the next scheduled withdrawal at:

### **Regular Mail**

Orinda Income Opportunities Fund  
c/o U.S. Bank Global Fund Services  
P.O. Box 701  
Milwaukee, Wisconsin 53201-0701

### **Overnight Express Mail**

Orinda Income Opportunities Fund  
c/o U.S. Bank Global Fund Services  
615 East Michigan Street, 3rd Floor  
Milwaukee, Wisconsin 53202

A withdrawal under the SWP involves a redemption of shares and may result in a gain or loss for federal income tax purposes. In addition, if the amount requested to be withdrawn exceeds the amount available in your account, which includes any dividends credited to your account, the account will ultimately be depleted. To establish a SWP, an investor must complete the appropriate sections of the account application. For additional information on the SWP, please call the Transfer Agent at 1-855-467-4632 (855-4ORINDA).

If shares of the Fund are held in a “street name” account with a financial intermediary, all recordkeeping, transaction processing and payments of distributions relating to the beneficial owner’s account will be performed by the intermediary, and not by the Fund or its Transfer Agent. Since the Fund will have no record of the beneficial owner’s transactions, a beneficial owner should contact the financial intermediary to purchase, redeem or exchange shares, to make changes in or give instructions concerning the account or to obtain information about the account.

**Good Order.** A redemption request is considered to be in good order when the redemption request includes the name of the Fund, the number of shares or dollar amount to be redeemed, the account number, and signatures by all of the shareholders whose names appear on the account registration with a signature guarantee, if applicable. Please see “Redemption of Fund Shares” for instructions. Redemption requests not in good order may be delayed.

## **Dividends and Distributions**

The Fund will distribute substantially all of its net investment income and net realized capital gains, if any, to its shareholders. All distributions are reinvested in the form of additional full and fractional Shares of the Fund unless a shareholder elects otherwise.

The Fund will declare and pay dividends from net investment income quarterly. Net realized capital gains (including net short-term capital gains), if any, will be distributed by the Fund at least annually. The estimated amount of any annual distribution will be posted to the Adviser’s website at [www.orindafunds.com](http://www.orindafunds.com), or a free copy may be obtained by calling 1-855-467-4632 (855-4ORINDA).

The Fund may pay additional distributions and dividends at other times if necessary for the Fund to avoid U.S. federal tax. The Fund’s distributions and dividends, whether received in cash or reinvested in additional Fund Shares, are subject to U.S. federal income tax.

All distributions will be reinvested in Fund shares unless you elect to receive cash. If you elect to receive distributions and/or capital gains paid in cash, and the U.S. Postal Service cannot deliver the check, or if a check remains outstanding for six months, the Fund reserves the right to reinvest the distribution check in your account, at the Fund’s current NAV, and to reinvest all subsequent distributions. You may change the distribution option on your account at any time by telephone or in writing. You should notify the Transfer Agent in writing or by telephone at least five (5) days prior to the next distribution.

## **Taxes**

The following is a summary of certain United States tax considerations relevant under current law, which may be subject to change in the future. Except where otherwise indicated, the discussion relates to investors who are individual United States citizens or residents. You should consult your tax adviser for further information regarding federal, state, local and/or foreign tax consequences relevant to your specific situation.

**Federal Taxes of Distributions.** The Fund contemplates distributing as dividends each year all or substantially all of its taxable income, including its net capital gain (the excess of net long-term capital gain over net short-term capital loss). Except as otherwise discussed below, you will be subject to federal income tax on Fund distributions regardless of whether they are paid in cash or reinvested in additional shares. Fund distributions attributable to short-term capital gains and net investment income will generally be taxable to you as ordinary income, except as discussed below.

Distributions attributable to the net capital gain of the Fund will be taxable to you as long-term capital gain, no matter how long you have owned your Fund shares. The maximum long-term capital gain rate applicable to individuals, estates, and trusts is currently 23.8% (which includes a 3.8% Medicare tax). You will be notified annually of the tax status of distributions to you.

Distributions of “qualifying dividends” will also generally be taxable to you at long-term capital gain rates, as long as certain requirements are met. In general, if 95% or more of the gross income of the Fund (other than net capital gain) consists of dividends received from domestic corporations or “qualified” foreign corporations (“qualifying dividends”), then all distributions paid by the Fund to individual shareholders will be taxed at long-term capital gains rates. But if less than 95% of the gross income of the Fund (other than net capital gain) consists of qualifying dividends, then distributions paid by the Fund to individual shareholders will be qualifying dividends only to the extent they are derived from qualifying dividends earned by the Fund. For the lower rates to apply, you must have owned your Fund shares for at least 61 days during the 121-day period beginning on the date that is 60 days before the Fund’s ex-dividend date (and the Fund will need to have met a similar holding period requirement with respect to the shares of the corporation paying the qualifying dividend). The amount of the Fund’s distributions that qualify for this favorable treatment may be reduced as a result of the Fund’s securities lending activities (if any), a high portfolio turnover rate or investments in debt securities or non-qualified foreign corporations.

The Fund may make distributions to you of “section 199A dividends” with respect to qualified dividends that it receives with respect to the Fund’s investments in REITs. A section 199A dividend is any dividend or part of such dividend that the Fund pays to you and reports as a section 199A dividend in written statements furnished to you. Distributions paid by the Fund that are eligible to be treated as section 199A dividends for a taxable year may not exceed the “qualified REIT dividends” received by the Fund from a REIT reduced by the Fund’s allocable expenses. Section 199A dividends may be taxed to individuals and other non-corporate shareholders at a reduced effective federal income tax rate, provided you have satisfied a holding period requirement for the Fund’s shares and satisfied certain other conditions. For the lower rates to apply, you must have owned your Fund shares for at least 46 days during the 91-day period beginning on the date that is 45 days before the Fund’s ex-dividend date, but only to the extent that you are not under an obligation (under a short-sale or otherwise) to make related payments with respect to positions in substantially similar or related property.

Distributions from the Fund will generally be taxable to you in the taxable year in which they are paid, with one exception. Distributions declared by the Fund in October, November or December and paid in January of the following year are taxed as though they were paid on December 31.

The Fund may be subject to foreign withholding or other foreign taxes on income or gain from certain foreign securities. If more than 50% of the value of the total assets of the Fund consists of stocks and securities (including debt securities) of foreign corporations at the close of a taxable year, the Fund may elect, for federal income tax purposes, to treat certain foreign taxes paid by it, including generally any withholding and other foreign income taxes, as paid by its shareholders. If the Fund makes this election, the amount of those foreign taxes paid by the Fund will be included in its shareholders’ income pro rata (in addition to taxable distributions actually received by them), and each such shareholder will be entitled either (1) to credit that proportionate amount of taxes against U.S. federal income tax liability as a foreign tax credit or (2) to take that amount as an itemized deduction. If the Fund is not eligible or chooses not to make this election, the Fund will be entitled to deduct any such foreign taxes in computing the amounts it is required to distribute.

A portion of distributions paid by the Fund to shareholders that are corporations may also qualify for the dividends-received deduction for corporations, subject to certain holding period requirements and debt financing limitations. Only the portions of Fund dividends that are attributable to dividends the Fund receives from U.S. companies may qualify for this dividends-received deduction. The amount of the dividends qualifying for this deduction may, however, be reduced as a result of the Fund’s securities lending activities (if any), by a high portfolio turnover rate or by investments in debt securities or foreign corporations.

If you purchase shares just before a distribution, the purchase price will reflect the amount of the upcoming distribution, but you will be taxed on the entire amount of the distribution received, even though, as an economic matter, the distribution simply constitutes a return of capital. This adverse tax result is known as “buying into a dividend.”

**Sales of Shares.** You will generally recognize taxable gain or loss for federal income tax purposes on a sale or redemption of your shares based on the difference between your tax basis in the shares and the amount you receive for them. Generally, you will recognize long-term capital gain or loss if you have held your Fund shares for over twelve months at the time you dispose of them.

Any loss realized on shares held for six months or less will be treated as a long-term capital loss to the extent of any capital gain dividends that were received on the shares. Additionally, any loss realized on a disposition of shares of the Fund may be disallowed under “wash sale” rules to the extent the shares disposed of are replaced with other shares of the Fund within a period of 61 days beginning 30 days before and ending 30 days after the shares are disposed of, such as pursuant to a dividend reinvestment in shares of the Fund. If disallowed, the loss will be reflected in an upward adjustment to the basis of the shares acquired.

The Fund (or relevant broker or financial adviser) is required to compute and report to the Internal Revenue Service (“IRS”) and furnish to Fund shareholders cost basis information when such shares are sold. The Fund has elected to use the average cost method, unless you instruct the Fund to use a different IRS-accepted cost basis method, or choose to specifically identify your shares at the time of each sale. If your account is held by your broker or other financial adviser, they may select a different cost basis method. In these cases, please contact your broker or other financial adviser to obtain information with respect to the available methods and elections for your account. You should carefully review the cost basis information provided by the Fund and make any additional basis, holding period or other adjustments that are required when reporting these amounts on your federal and state income tax returns. Fund shareholders should consult with their tax advisers to determine the best IRS-accepted cost basis method for their tax situation and to obtain more information about how the cost basis reporting requirements apply to them.

**IRAs and Other Tax-Qualified Plans.** The one major exception to the preceding tax principles is that distributions on, and sales and redemptions of, shares held in an IRA (or other tax-qualified plan) will not be currently taxable unless such shares were acquired with borrowed funds.

**Backup Withholding.** The Fund may be required in certain cases to withhold and remit to the IRS a percentage of taxable dividends or gross proceeds realized upon sale payable to shareholders who have failed to provide a correct tax identification number in the manner required, or who are subject to withholding by the IRS for failure to properly include on their return payments of taxable interest or dividends, or who have failed to certify to the Fund that they are not subject to backup withholding when required to do so or that they are “exempt recipients.” The current backup withholding rate is 24%.

**U.S. Tax Treatment of Foreign Shareholders.** Generally, nonresident aliens, foreign corporations and other foreign investors are subject to a 30% withholding tax on dividends paid by a U.S. corporation, although the rate may be reduced for an investor that is a qualified resident of a foreign country with an applicable tax treaty with the United States. In the case of a regulated investment company such as the Fund, however, certain categories of dividends are exempt from the 30% withholding tax. These generally include dividends attributable to the Fund’s net capital gains (the excess of net long-term capital gains over net short-term capital losses), dividends attributable to the Fund’s interest income from U.S. obligors and dividends attributable to net short-term capital gains of the Fund.

Foreign shareholders will generally not be subject to U.S. tax on gains realized on the sale or redemption of shares in the Fund, except that a nonresident alien individual who is present in the United States for 183 days or more in a calendar year will be taxable on such gains and on capital gain dividends from the Fund.

In contrast, if a foreign investor conducts a trade or business in the United States and the investment in the Fund is effectively connected with that trade or business, then the foreign investor’s income from the Fund will generally be subject to U.S. federal income tax at graduated rates in a manner similar to the income of a U.S. citizen or resident.

The Fund will also generally be required to withhold 30% tax on certain payments to foreign entities that do not provide a Form W-8BEN-E that evidences their compliance with, or exemption from, specified information reporting requirements under the Foreign Account Tax Compliance Act.

All foreign investors should consult their own tax advisers regarding the tax consequences in their country of residence of an investment in the Fund.

Shares of the Fund have not been registered for sale outside of the United States and certain U.S. territories.

**State and Local Taxes.** You may also be subject to state and local taxes on income and gain from Fund shares. State income taxes may not apply, however, to the portions of the Fund’s distributions, if any, that are attributable to interest on U.S. government securities. You should consult your tax adviser regarding the tax status of distributions in your state and locality.

More information about taxes is contained in the SAI.

# DISTRIBUTION OF FUND SHARES

## Description of Classes

The Company has adopted a multiple class plan that allows the Fund to offer one or more classes of shares. The Fund has registered three classes of shares – Class I, Class A, and Class D. This Prospectus offers Class I shares, Class A shares, and Class D shares of the Fund. The different classes of shares represent investments in the same portfolio of securities, but the classes are subject to different expenses as outlined below and may have different share prices:

- Class I shares do not impose a sales charge, CDSC or a Rule 12b-1 fee. If you purchase Class I shares, you will pay the NAV per share next determined after your order is received.
- Class A shares are charged a front-end sales load. Class A shares are also charged a 0.25% Rule 12b-1 distribution and servicing fee. Class A shares do not have a contingent deferred sales charge (“CDSC”).
- Class D shares do not charge a front-end sales load. Class D shares are charged a 1.00% Rule 12b-1 distribution and servicing fee. Class D shares do not have a CDSC.

## More about Class I Shares

Class I shares do not carry a sales charge. If you purchase Class I shares of the Fund you will pay the NAV per share next determined after your order is received.

The following persons are eligible to invest in Class I shares:

1. Institutional investors including banks, savings institutions, credit unions and other financial institutions, pension, profit sharing and employee benefit plans and trusts, insurance companies, investment companies, investment advisers, broker-dealers and financial advisers acting for their own accounts or for the accounts of their clients;
2. Full-time employees, agents, employees of agents, retirees and directors (trustees), and members of their families (*i.e.*, parent, child, spouse, domestic partner, sibling, set or adopted relationships, grandparent, grandchild and UTMA accounts naming qualifying persons) of the Adviser and its affiliated companies; and
3. Shareholders investing through accounts at approved broker-dealers who act as selling agents for the Fund.

## More About Class A Shares

Class A shares of the Fund are retail shares that require that you pay a sales charge when you invest in the Fund unless you qualify for a reduction or waiver of the sales charge. As described earlier, Class A shares are also subject to Rule 12b-1 fees (or distribution and service fees) of 0.25% of average daily net assets, which are assessed against the shares of the Fund.

If you purchase Class A shares of the Fund you will pay the public offering price (“POP”) which is the NAV next determined after your order is received plus a sales charge (shown in percentages below) depending on the amount of your investment. Since sales charges are reduced for Class A share purchases above certain dollar amounts, known as “breakpoint thresholds,” the POP is lower for these purchases. The dollar amount of the sales charge is the difference between the POP of the shares purchased (based on the applicable sales charge in the table below) and the NAV of those shares. Because of rounding in the calculation of the POP, the actual sales charge you pay may be more or less than that calculated using the percentages shown below. The sales charge is calculated as follows:

Investment Amount	Sales Charge as a % of Offering Price <sup>(1)</sup>	Sales Charge as a % of Net Amount Invested	Dealer Reallowance
Less than \$50,000	5.00%	5.26%	5.00%
\$50,000 but less than \$100,000	4.50%	4.71%	4.50%
\$100,000 but less than \$250,000	3.50%	3.63%	3.50%
\$250,000 but less than \$500,000	2.50%	2.56%	2.50%
\$500,000 but less than \$750,000	2.25%	2.30%	2.25%
\$750,000 but less than \$1,000,000	1.75%	1.78%	1.75%
\$1,000,000 and above	0.00%	0.00%	0.00%

<sup>(1)</sup> Offering price includes the front-end sales load. The sales charge you pay may differ slightly from the amount set forth above because of rounding that occurs in the calculation used to determine your sales charge.

The Distributor will receive all initial sales charges for the purchase of Class A shares of the Fund without a dealer of record.

### ***Class A Sales Charge Reductions and Waivers***

You may be able to reduce the sales charge on Class A shares of the Fund based on the type of transaction, the combined market value of your accounts or intended investment, and for certain groups or classes of shareholders. If you believe you are eligible for any of the following reductions or waivers, it is up to you to ask the selling agent or shareholder servicing agent for the reduction and to provide appropriate proof of eligibility. The programs described below and others are explained in greater detail in the SAI.

*Reinvested Distributions:* You pay no sales charges on Class A shares you buy with reinvested distributions from Class A distributions from the Fund.

*Account Reinstatement:* You pay no sales charges on Class A shares you purchase with the proceeds of a redemption of Class A shares of the Fund within 120 days of the date of the redemption. To reinvest in Class A shares at NAV (without paying a sales charge), you must notify the Fund in writing or notify your financial intermediary.

*Letter of Intent (“LOI”):* By signing an LOI prior to purchase, you pay a lower sales charge now in exchange for promising to invest an amount within the next 13 months sufficient to meet one of the above breakpoint thresholds. The investment must satisfy the initial purchase agreement. Reinvested distributions do not count as purchases made during this period. The Fund will hold in escrow shares equal to approximately 5.00% of the amount of shares you indicate in the LOI. If you do not invest the amount specified in the LOI before the expiration date, the Transfer Agent will redeem a sufficient amount of escrowed shares to pay the difference between the reduced sales load you paid and the sales load you would have paid based on the total amount actually invested in Class A shares as of the expiration date. Otherwise, the Transfer Agent will release the escrowed shares when you have invested the agreed amount. Any shares purchased within 90 days of the date you sign the LOI may be used as credit toward completion, but the reduced sales charge will only apply to new purchases made on or after that date.

*Rights of Accumulation (“ROA”):* You may combine the value at the current public offering price of Class A shares of the Fund with a new purchase of Class A shares of the Fund to reduce the sales charge on the new purchase. The sales charge for the new shares will be figured at the rate in the table above that applies to the combined value of your currently owned shares and the amount of the new investment. ROA allows you to combine the value of your account with the value of other eligible accounts for purposes of meeting the breakpoint thresholds above.

You may aggregate your eligible accounts with the eligible accounts of members of your immediate family to obtain a breakpoint discount. The types of eligible accounts that may be aggregated to obtain the breakpoint discounts described above include individual accounts, joint accounts and certain IRAs.

For the purpose of obtaining a breakpoint discount, members of your “immediate family” include your spouse, child, stepchild, parent, sibling, grandchild and grandparent, in each case including in-law and adoptive relationships. In addition, a fiduciary can count all shares purchased for a trust, estate or other fiduciary account (including one or more employee benefit plans of the same employer) that has multiple accounts. Eligible accounts include those registered in the name of your financial intermediary through which you own shares in the Fund.

*Certain groups or classes of shareholders:* If you fall into any of the following categories, you can buy Class A shares at NAV without a sales charge:

- Current and retired employees, directors/trustees and officers of:
  - The Company;
  - The Adviser and its affiliates; and
  - Family members (spouse, domestic partner, parents, grandparents, children, grandchildren and siblings (including step and in-law)) of any of the above.
- Any trust, pension, profit sharing or other benefit plan for current employees, directors/trustees and officers of the Adviser and its affiliates.
- Current employees of:
  - The Transfer Agent;
  - Broker-dealers who act as selling agents for the Fund/Trust; and
  - Family members (spouse, domestic partner, parents, grandparents, children, grandchildren and siblings (including step and in-law)) of any of the above.
- Qualified registered investment advisers who buy through a broker-dealer or service agent who has entered into an agreement with the Distributor that allows for load-waived Class A shares purchases.

- The Adviser’s clients, their employees and immediate family members of such employees.

Different financial intermediaries may impose different sales charges and these variations are described in [Appendix A](#) of this Prospectus.

**More about Class D Shares**

Class D shares do not carry a sales charge. Class D shares are subject to Rule 12b-1 fees (or distribution and service fees) of 1.00% of average daily net assets, which are assessed against the shares of the Fund. If you purchase Class D shares of the Fund you will pay the NAV per share next determined after your order is received.

More information regarding the Fund’s sales charges, breakpoint thresholds and waivers is available in the SAI and free of charge on the Fund’s website: [www.orindafunds.com](http://www.orindafunds.com), by clicking on “Breakpoints and Sales Loads.”

**Minimum Investments**

You may open a Fund account with a minimum initial investment as listed in the table below.

<b>Type of Account</b>	<b>To Open Your Account</b>	<b>To Add to Your Account</b>
<b>All Accounts</b>		
Class I shares	\$100,000	Any amount
Class A shares	\$5,000	Any amount
Class D shares	\$5,000	Any amount

The Fund’s minimum investment requirements may be waived from time to time by the Adviser, and for the following types of shareholders:

- current and retired employees, directors/trustees and officers of the Company, the Adviser and its affiliates and certain family members of each of them (*i.e.*, spouse, domestic partner, child, parent, sibling, grandchild and grandparent, in each case including in-law, step and adoptive relationships);
- any trust, pension, profit sharing or other benefit plan for current and retired employees, directors/trustees and officers of the Adviser and its affiliates;
- current employees of the Transfer Agent, broker-dealers who act as selling agents for the Fund, intermediaries that have marketing agreements in place with the Adviser and the immediate family members of any of them;
- registered investment advisers who buy through a broker-dealer or service agent who has entered into an agreement with the Fund’s distributor;
- qualified broker-dealers who have entered into an agreement with the Fund’s distributor; and
- existing clients of the Adviser, their employees and immediate family members of such employees.

**General Policies**

Some of the following policies are mentioned above. In general, the Fund reserves the right to:

- Refuse, change, discontinue, or temporarily suspend account services, including purchase, or telephone redemption privileges, for any reason;
- Reject any purchase request for any reason. Generally, the Fund will do this if the purchase is disruptive to the efficient management of the Fund (due to the timing of the investment or an investor’s history of excessive trading);
- Redeem all shares in your account if your balance falls below \$2,000 due to redemption activity. If, within 30 days of the Fund’s written request, you have not increased your account balance, you may be required to redeem your shares. The Fund will not require you to redeem shares if the value of your account drops below the investment minimum due to fluctuations of NAV;
- Delay paying redemption proceeds for up to seven calendar days after receiving a request, if an earlier payment could adversely affect the Fund; and
- Reject any purchase or redemption request that does not contain all required documentation.

If you elect telephone privileges on the account application or in a letter to the Fund, you may be responsible for any fraudulent telephone orders as long as the Fund has taken reasonable precautions to verify your identity. If an account has more than one owner or authorized person, the Fund will accept telephone instructions for any one owner or authorized person. In addition, once you place a telephone transaction request, it cannot be canceled or modified after the close of regular trading on the NYSE (generally, 4:00 p.m., Eastern time).

Telephone trades must be received by or prior to market close. During periods of high market activity, shareholders may encounter higher than usual call wait times. Please allow sufficient time to ensure that you will be able to complete your telephone transaction prior to market close. If you are unable to contact the Fund by telephone, you may also mail your request to the Fund at the address listed under “How to Buy Shares.”

Your financial intermediary may establish policies that differ from those of the Fund. For example, the organization may charge transaction fees, set higher minimum investments, or impose certain limitations on buying or selling shares in addition to those identified in this Prospectus. Contact your financial intermediary for details.

### **Conversion Feature**

Class A shares and Class D shares of the Fund that have been purchased by a financial intermediary may be converted into Class I shares of the Fund. The minimum initial investment requirement for Class I shares may be waived by the Adviser for existing clients. Any such conversion will be effected at NAV without the imposition of any fee or other charges by the Fund. Please contact your financial intermediary about any fees that it may charge.

Investors who hold Class I shares of the Fund through a financial intermediary sponsored fee-based program, but who subsequently become ineligible to participate in the program or withdraw from the program, may be subject to conversion of their Class I shares by their program provider to another class of shares of the Fund having expenses (including Rule 12b-1 fees) that may be higher than the expenses of the Class I shares. Investors should contact their program provider to obtain information about their eligibility for the provider’s program and the class of shares they would receive upon such a conversion.

### **Fund Mailings**

Statements and reports that the Fund sends to you include the following:

- Confirmation statements (after every transaction that affects your account balance or your account registration);
- Annual and semi-annual shareholder reports (every six months); and
- Quarterly account statements.

### **Householding**

In an effort to decrease costs, the Fund intends to reduce the number of duplicate prospectuses, annual and semi-annual reports, proxy statements and other similar documents you receive by sending only one copy of each to those addresses shared by two or more accounts and to shareholders the Transfer Agent reasonably believes are from the same family or household. Once implemented, if you would like to discontinue householding for your accounts, please call toll-free at 1-855-467-4632 (855-4ORINDA) to request individual copies of these documents. Once the Transfer Agent receives notice to stop householding, the Transfer Agent will begin sending individual copies thirty days after receiving your request. This policy does not apply to account statements.

### **Lost Shareholder, Inactive Accounts and Unclaimed Property**

It is important that the Fund maintains a correct address for each shareholder. An incorrect address may cause a shareholder’s account statements and other mailings to be returned to the Fund. Based upon statutory requirements for returned mail, the Fund will attempt to locate the shareholder or rightful owner of the account. If the Fund is unable to locate the shareholder, then it will determine whether the shareholder’s account can legally be considered abandoned. Your mutual fund account may be transferred to the state government of your state of residence if no activity occurs within your account during the “inactivity period” specified in your state’s abandoned property laws. The Fund is legally obligated to escheat (or transfer) abandoned property to the appropriate state’s unclaimed property administrator in accordance with statutory requirements. The shareholder’s last known address of record determines which state has jurisdiction. Please proactively contact the Transfer Agent at 1-855-467-4632 (855-4ORINDA) (toll free) at least annually to ensure your account remains in active status.

If you are a resident of the state of Texas, you may designate a representative to receive notifications that, due to inactivity, your mutual fund account assets may be delivered to the Texas Comptroller. Please contact the Transfer Agent if you wish to complete a Texas Designation of Representative form.

**NO PERSON HAS BEEN AUTHORIZED TO GIVE ANY INFORMATION OR MAKE ANY REPRESENTATIONS NOT CONTAINED IN THIS PROSPECTUS OR IN THE FUND’S SAI INCORPORATED HEREIN BY REFERENCE, IN CONNECTION WITH THE OFFERING MADE BY THIS PROSPECTUS AND, IF GIVEN OR MADE, SUCH**

**REPRESENTATIONS MUST NOT BE RELIED UPON AS HAVING BEEN AUTHORIZED BY THE COMPANY OR ITS DISTRIBUTOR. THIS PROSPECTUS DOES NOT CONSTITUTE AN OFFERING BY THE COMPANY OR BY THE DISTRIBUTOR IN ANY JURISDICTION IN WHICH SUCH OFFERING MAY NOT LAWFULLY BE MADE.**



## FINANCIAL HIGHLIGHTS

The financial highlights tables are intended to help you understand the Fund's financial performance for the past 5 years. The financial information presented for each applicable period prior to May 1, 2017 is that of the Predecessor Fund. The Fund is the accounting successor to the Predecessor Fund as a result of the reorganization of the Predecessor Fund into the Fund following the close of business on April 28, 2017. The Fund has adopted the financial statements of the Predecessor Fund. Certain information reflects financial results for a single Fund share. The total returns in the table represent the rate that an investor would have earned or lost on an investment in the Fund, assuming reinvestment of all dividends and distributions. This information has been audited by Tait, Weller & Baker LLP, an independent registered public accounting firm, whose report, along with the Fund's financial statements, are included in the annual report, which is available upon request.

### For a capital share outstanding throughout the period

#### Class I Shares

	Year Ended August 31, 2019	Year Ended August 31, 2018	Six Months Ended August 31, 2017 <sup>(2)(3)</sup>	Year Ended February 28, 2017	Year Ended February 29, 2016	Year Ended February 28, 2015
<b>Net Asset Value –</b>						
<b>Beginning of Period</b>	\$ 22.50	\$ 23.42	\$ 23.66	\$ 21.36	\$ 25.29	\$ 25.60
<b>Income from Investment Operations:</b>						
Net investment income/(loss) <sup>(1)</sup>	0.95	0.86	0.63	1.10	0.99	1.15
Net realized and unrealized gain/ (loss) on investments	(0.12)	(0.17)	(0.02)	2.90	(3.36)	0.12
Total from investment operations	0.83	0.69	0.61	4.00	(2.37)	1.27
<b>Less Distributions:</b>						
Dividends from net investment income	(1.14)	(1.15)	(0.63)	(1.10)	(1.02)	(1.39)
Distributions from net realized gains	—	—	—	—	—	(0.01)
Return of Capital	(0.36)	(0.46)	(0.22)	(0.60)	(0.54)	(0.18)
Total distributions	(1.50)	(1.61)	(0.85)	(1.70)	(1.56)	(1.58)
<b>Net Asset Value –</b>						
<b>End of Period</b>	\$ 21.83	\$ 22.50	\$ 23.42	\$ 23.66	\$ 21.36	\$ 25.29
<b>Total Return/(loss)</b>	4.17%	3.24%	2.62% <sup>(4)</sup>	19.29%	(9.81)%	5.08%
<b>Ratios and Supplemental Data:</b>						
Net assets,						
end of period (thousands)	\$ 206,355	\$ 193,184	\$ 193,361	\$ 180,360	\$ 121,400	\$ 151,017
Ratio of operating expenses to average net assets:						
Before Recoupments/Reimbursements	1.79%	1.92%	1.82% <sup>(5)</sup>	2.01%	1.85%	1.64%
After Recoupments/Reimbursements	1.79%	1.92%	1.82% <sup>(5)</sup>	2.01%	1.84%	1.70%
Ratio of interest expense and dividends on short positions to average net assets	0.50%	0.63%	0.55% <sup>(5)</sup>	0.68%	0.49%	0.27%
Ratio of net investment income/ (loss) to average net assets:						
Before Recoupments/Reimbursements	4.43%	3.83%	5.33% <sup>(5)</sup>	4.68%	4.21%	4.71%
After Recoupments/Reimbursements	4.43%	3.83%	5.33% <sup>(5)</sup>	4.68%	4.22%	4.65%
Portfolio turnover rate	131%	102%	46% <sup>(4)</sup>	121%	127%	185%

(1) Calculated based on average shares outstanding during the period.

(2) Effective as of the close of business on April 28, 2017, the Fund acquired all the assets and liabilities of the Orinda Income Opportunities Fund, a series of Advisors Series Trust (the "Predecessor Fund"). The financial highlights for the periods prior to that date reflect the performance of the Predecessor Fund.

(3) The Fund changed its fiscal year end to August 31.

(4) Not annualized.

(5) Annualized.

**For a capital share outstanding throughout the period**

**Class A Shares**

	Year Ended August 31, 2019	Year Ended August 31, 2018	Six Months Ended August 31, 2017 <sup>(2)(3)</sup>	Year Ended February 28, 2017	Year Ended February 29, 2016	Year Ended February 28, 2015
<b>Net Asset Value –</b>						
<b>Beginning of Period</b>	\$ 22.46	\$ 23.33	\$ 23.58	\$ 21.31	\$ 25.25	\$ 25.57
<b>Income from Investment Operations:</b>						
Net investment income/(loss) <sup>(1)</sup>	0.85	0.77	0.59	1.03	0.93	0.97
Net realized and unrealized gain/ (loss) on investments	(0.10)	(0.14)	(0.02)	2.88	(3.37)	0.22
Total from investment operations	0.75	0.63	0.57	3.91	(2.44)	1.19
<b>Less Distributions:</b>						
Dividends from net investment income	(1.08)	(1.04)	(0.60)	(1.04)	(0.96)	(1.32)
Distributions from net realized gains	—	—	—	—	—	(0.01)
Return of Capital	(0.36)	(0.46)	(0.22)	(0.60)	(0.54)	(0.18)
Total distributions	(1.44)	(1.50)	(0.82)	(1.64)	(1.50)	(1.51)
<b>Net Asset Value –</b>						
<b>End of Period</b>	\$ 21.77	\$ 22.46	\$ 23.33	\$ 23.58	\$ 21.31	\$ 25.25
<b>Total Return/(loss)</b>	3.82%	2.94%	2.49% <sup>(4)</sup>	18.90%	(10.09)%	4.79%
<b>Ratios and Supplemental Data:</b>						
Net assets,						
end of period (thousands)	\$ 62,963	\$ 45,783	\$112,549	\$ 101,270	\$ 66,375	\$ 74,834
Ratio of operating expenses to average net assets:						
Before Recoupments/Reimbursements	2.04%	2.07%	2.12% <sup>(5)</sup>	2.29%	2.15%	1.96%
After Recoupments/Reimbursements	2.04%	2.07%	2.12% <sup>(5)</sup>	2.29%	2.15%	2.00%
Ratio of interest expense and dividends on short positions to average net assets	0.46%	0.51%	0.55% <sup>(5)</sup>	0.66%	0.48%	0.28%
Ratio of net investment income/ (loss) to average net assets:						
Before Recoupments/Reimbursements	3.96%	3.37%	5.03% <sup>(5)</sup>	4.34%	3.97%	4.53%
After Recoupments/Reimbursements	3.96%	3.37%	5.03% <sup>(5)</sup>	4.34%	3.97%	4.49%
Portfolio turnover rate	131%	102%	46% <sup>(4)</sup>	121%	127%	185%

(1) Calculated based on average shares outstanding during the period.

(2) Effective as of the close of business on April 28, 2017, the Fund acquired all the assets and liabilities of the Orinda Income Opportunities Fund, a series of Advisors Series Trust (the “Predecessor Fund”). The financial highlights for the periods prior to that date reflect the performance of the Predecessor Fund.

(3) The Fund changed its fiscal year end to August 31.

(4) Not annualized.

(5) Annualized.

**For a capital share outstanding throughout the period**

**Class D Shares**

	Year Ended August 31, 2019	Year Ended August 31, 2018	Six Months Ended August 31, 2017 <sup>(2)(3)</sup>	Year Ended February 28, 2017	Year Ended February 29, 2016	Year Ended February 28, 2015
<b>Net Asset Value –</b>						
<b>Beginning of Period</b>	\$ 22.23	\$ 23.18	\$ 23.49	\$ 21.25	\$ 25.17	\$ 25.51
<b>Income from Investment Operations:</b>						
Net investment income/(loss) <sup>(1)</sup>	0.73	0.63	0.51	0.87	0.82	0.92
Net realized and unrealized gain/ (loss) on investments	(0.13)	(0.16)	(0.02)	2.88	(3.37)	0.07
Total from investment operations	0.60	0.47	0.49	3.75	(2.55)	0.99
<b>Less Distributions:</b>						
Dividends from net investment income	(0.95)	(0.96)	(0.58)	(0.90)	(0.83)	(1.14)
Distributions from net realized gains	—	—	—	—	—	(0.01)
Return of Capital	(0.36)	(0.46)	(0.22)	(0.61)	(0.54)	(0.18)
Total distributions	(1.31)	(1.42)	(0.80)	(1.51)	(1.37)	(1.33)
<b>Net Asset Value –</b>						
<b>End of Period</b>	\$ 21.52	\$ 22.23	\$ 23.18	\$ 23.49	\$ 21.25	\$ 25.17
<b>Total Return/(loss)</b>	3.12%	2.23%	2.13% <sup>(4)</sup>	18.10%	(10.56)%	3.97%
<b>Ratios and Supplemental Data:</b>						
Net assets,						
end of period (thousands)	\$ 17,939	\$ 20,497	\$22,274	\$ 23,963	\$ 21,405	\$ 23,336
Ratio of operating expenses to average net assets:						
Before Recoupments/Reimbursements	2.80%	2.93%	2.79% <sup>(5)</sup>	2.98%	2.81%	2.70%
After Recoupments/Reimbursements	2.80%	2.93%	2.79% <sup>(5)</sup>	2.98%	2.67%	2.76%
Ratio of interest expense and dividends on short positions to average net assets	0.52%	0.64%	0.55% <sup>(5)</sup>	0.67%	0.49%	0.27%
Ratio of net investment income/ (loss) to average net assets:						
Before Recoupments/Reimbursements	3.43%	2.90%	4.36% <sup>(5)</sup>	3.76%	3.32%	3.75%
After Recoupments/Reimbursements	3.43%	2.90%	4.36% <sup>(5)</sup>	3.76%	3.46%	3.69%
Portfolio turnover rate	131%	102%	46% <sup>(4)</sup>	121%	127%	185%

(1) Calculated based on average shares outstanding during the period.

(2) Effective as of the close of business on April 28, 2017, the Fund acquired all the assets and liabilities of the Orinda Income Opportunities Fund, a series of Advisors Series Trust (the “Predecessor Fund”). The financial highlights for the periods prior to that date reflect the performance of the Predecessor Fund.

(3) The Fund changed its fiscal year end to August 31.

(4) Not annualized.

(5) Annualized.

## Appendix A

THE INFORMATION ENCLOSED IN THIS APPENDIX IS PART OF, AND INCORPORATED INTO, THE ORINDA INCOME OPPORTUNITIES FUND'S PROSPECTUS DATED DECEMBER 31, 2019.

### Waivers and Discounts Available from Intermediaries

The availability of certain sales charge waivers and discounts will depend on whether you purchase your shares directly from a Fund or through a financial intermediary. Intermediaries may have different policies and procedures regarding the availability of front-end sales load waivers or contingent deferred (back-end) sales load ("CDSC") waivers, which are discussed below.

In all instances, it is the purchaser's responsibility to notify the Fund or the purchaser's financial intermediary at the time of purchase of any relationship or other facts qualifying the purchaser for sales charge waivers or discounts. **For waivers and discounts not available through a particular intermediary, shareholders will have to purchase Fund shares directly from the Fund or through another intermediary to receive these waivers or discounts.**

### Merrill Lynch

Effective April 10, 2017, shareholders purchasing Fund shares through a Merrill Lynch platform or account will be eligible only for the following load waivers (front-end sales charge waivers and contingent deferred, or back-end, sales charge waivers) and discounts, which may differ from those disclosed elsewhere in the Fund's prospectus or SAI.

<b>Front-end Sales Load Waivers on Class A Shares available at Merrill Lynch</b>
Employer-sponsored retirement, deferred compensation and employee benefit plans (including health savings accounts) and trusts used to fund those plans, provided that the shares are not held in a commission-based brokerage account and shares are held for the benefit of the plan
Shares purchased by or through a 529 Plan
Shares purchased through a Merrill Lynch affiliated investment advisory program
Shares purchased by third party investment advisors on behalf of their advisory clients through Merrill Lynch's platform
Shares of funds purchased through the Merrill Edge Self-Directed platform (if applicable)
Shares purchased through reinvestment of capital gains distributions and dividend reinvestment when purchasing shares of the same fund (but not any other fund within the fund family)
Shares exchanged from Class C ( <i>i.e.</i> level-load) shares of the same fund in the month of or following the 10-year anniversary of the purchase date
Employees and registered representatives of Merrill Lynch or its affiliates and their family members
Directors of the Fund, and employees of the Adviser or any of its affiliates, as described in this prospectus
Shares purchased from the proceeds of redemptions within the same fund family, provided (1) the repurchase occurs within 90 days following the redemption, (2) the redemption and purchase occur in the same account, and (3) redeemed shares were subject to a front-end or deferred sales load (known as Rights of Reinstatement)

<b>CDSC Waivers on A and C Shares available at Merrill Lynch</b>
Death or disability of the shareholder
Shares sold as part of a systematic withdrawal plan as described in the Fund's prospectus
Return of excess contributions from an IRA Account
Shares sold as part of a required minimum distribution for IRA and retirement accounts due to the shareholder reaching age 70½
Shares sold to pay Merrill Lynch fees but only if the transaction is initiated by Merrill Lynch
Shares acquired through a right of reinstatement
Shares held in retirement brokerage accounts, that are exchanged for a lower cost share class due to transfer to certain fee based accounts or platforms (applicable to A and C shares only)

<b>Front-end load Discounts Available at Merrill Lynch: Breakpoints, Rights of Accumulation &amp; Letters of Intent</b>
Breakpoints as described in this prospectus.
Rights of Accumulation (ROA) which entitle shareholders to breakpoint discounts will be automatically calculated based on the aggregated holding of fund family assets held by accounts within the purchaser's household at Merrill Lynch. Eligible fund family assets not held at Merrill Lynch may be included in the ROA calculation only if the shareholder notifies his or her financial advisor about such assets
Letters of Intent (LOI) which allow for breakpoint discounts based on anticipated purchases within a fund family, through Merrill Lynch, over a 13-month period of time (if applicable)

## PRIVACY NOTICE

<b>FACTS</b>	<b>WHAT DOES THE ORINDA INCOME OPPORTUNITIES FUND DO WITH YOUR PERSONAL INFORMATION?</b>
Why?	Financial companies choose how they share your personal information. Federal law gives consumers the right to limit some but not all sharing. Federal law also requires us to tell you how we collect, share, and protect your personal information. Please read this notice carefully to understand what we do.
What?	<p>The types of personal information we collect and share depend on the product or service you have with us. This information can include:</p> <ul style="list-style-type: none"> <li>• Social Security number</li> <li>• account balances</li> <li>• account transactions</li> <li>• transaction history</li> <li>• wire transfer instructions</li> <li>• checking account information</li> </ul> <p>When you are <i>no longer</i> our customer, we continue to share your information as described in this notice.</p>
How?	All financial companies need to share customers' personal information to run their everyday business. In the section below, we list the reasons financial companies can share their customers' personal information; the reasons the Orinda Income Opportunities Fund chooses to share; and whether you can limit this sharing.

Reasons we can share your personal information	Does the Orinda Income Opportunities Fund share?	Can you limit this sharing?
<b>For our everyday business purposes</b> — such as to process your transactions, maintain your account(s), respond to court orders and legal investigations, or report to credit bureaus	Yes	No
<b>For our marketing purposes</b> — to offer our products and services to you	Yes	No
<b>For joint marketing with other financial companies</b>	No	We don't share.
<b>For our affiliates' everyday business purposes</b> — information about your transactions and experiences	Yes	No
<b>For our affiliates' everyday business purposes</b> — information about your creditworthiness	No	We don't share.
<b>For our affiliates to market to you</b>	No	We don't share.
<b>For nonaffiliates to market to you</b>	No	We don't share.

Questions	Call (855)-467-4632 or go to <a href="http://www.orindafunds.com">www.orindafunds.com</a>
-----------	---

What we do	
<b>How does the Orinda Income Opportunities Fund protect my personal information?</b>	To protect your personal information from unauthorized access and use, we use security measures that comply with federal law. These measures include computer safeguards and secured files and buildings.
<b>How does the Orinda Income Opportunities Fund collect my personal information?</b>	<p>We collect your personal information, for example, when you</p> <ul style="list-style-type: none"> <li>• open an account</li> <li>• provide account information</li> <li>• give us your contact information</li> <li>• make a wire transfer</li> <li>• tell us where to send the money</li> </ul> <p>We also collect your information from others, such as credit bureaus, affiliates, or other companies.</p>
<b>Why can't I limit all sharing?</b>	<p>Federal law gives you the right to limit only</p> <ul style="list-style-type: none"> <li>• sharing for affiliates' everyday business purposes – information about your creditworthiness</li> <li>• affiliates from using your information to market to you</li> <li>• sharing for nonaffiliates to market to you</li> </ul> <p>State laws and individual companies may give you additional rights to limit sharing.</p>
Definitions	
<b>Affiliates</b>	<p>Companies related by common ownership or control. They can be financial and nonfinancial companies.</p> <ul style="list-style-type: none"> <li>• <i>Our affiliates include Orinda Investment Partners, LLC (“OIP”) and Orinda Asset Management, LLC (“OAM”).</i></li> </ul>
<b>Nonaffiliates</b>	<p>Companies not related by common ownership or control. They can be financial and nonfinancial companies.</p> <ul style="list-style-type: none"> <li>• <i>The Orinda Income Opportunities Fund doesn't share with nonaffiliates so they can market to you. The Fund may share information with nonaffiliates that perform marketing services on our behalf.</i></li> </ul>
<b>Joint Marketing</b>	<p>A formal agreement between nonaffiliated financial companies that together market financial products or services to you.</p> <ul style="list-style-type: none"> <li>• <i>The Orinda Income Opportunities Fund does not jointly market.</i></li> </ul>

**ORINDA INCOME OPPORTUNITIES FUND**  
**of**  
**The RBB Fund, Inc.**

1-855-467-4632 (855-4ORINDA)  
[www.orindafunds.com](http://www.orindafunds.com)

**For More Information:**

This Prospectus contains important information you should know before you invest. Read it carefully and keep it for future reference. Information about different sales load variations is provided in [Appendix A](#), which is incorporated into this Prospectus by reference. More information about the *Orinda Income Opportunities Fund* is available free of charge, upon request, including:

**Annual/Semi-Annual Reports**

These reports contain additional information about the Fund's investments, describe the Fund's performance, list portfolio holdings, and discuss recent market conditions and economic trends. The annual report will include market conditions and fund investment strategies that significantly affected the Fund's performance during its last fiscal year. The annual report and semi-annual report to shareholders may be obtained free of charge by calling 1-855-467-4632 (855-4ORINDA), or by visiting [www.orindafunds.com](http://www.orindafunds.com).

**Statement of Additional Information**

The Fund's SAI, dated December 31, 2019, has been filed with the SEC. The SAI, which includes additional information about the Fund, may be obtained free of charge, along with the annual and semi-annual reports, by calling 1-855-467-4632 (855-4ORINDA). The SAI, as supplemented from time to time, is incorporated by reference into this prospectus (and is legally part of the prospectus). The SAI is available on the Adviser's website at [www.orindafunds.com](http://www.orindafunds.com).

**Shareholder Inquiries**

Representatives are available to discuss account balance information, mutual fund prospectuses, literature, programs and services available. Hours: 9:00 a.m. to 8:00 p.m. (Eastern time) Monday–Friday. Call: 1-855-467-4632 (855-4ORINDA) or visit the website of the Adviser at [www.orindafunds.com](http://www.orindafunds.com).

**Purchases and Redemptions**

Call 1-855-467-4632 (855-4ORINDA).

**Written Correspondence**

Street Address:

Orinda Income Opportunities Fund, c/o U.S. Bank Global Fund Services, 615 East Michigan Street, 3rd Floor, Milwaukee, Wisconsin 53202

P.O. Box Address:

Orinda Income Opportunities Fund, c/o U.S. Bank Global Fund Services, P.O. Box 701, Milwaukee, Wisconsin 53201-0701

**Securities and Exchange Commission**

You may also view and copy information about the Company and the Fund, including the SAI, by visiting the EDGAR Database on the SEC's Internet site at [www.sec.gov](http://www.sec.gov). You may also obtain copies of Fund documents by paying a duplicating fee and sending an electronic request to the following e-mail address: [publicinfo@sec.gov](mailto:publicinfo@sec.gov).

INVESTMENT COMPANY ACT FILE NO. 811-05518